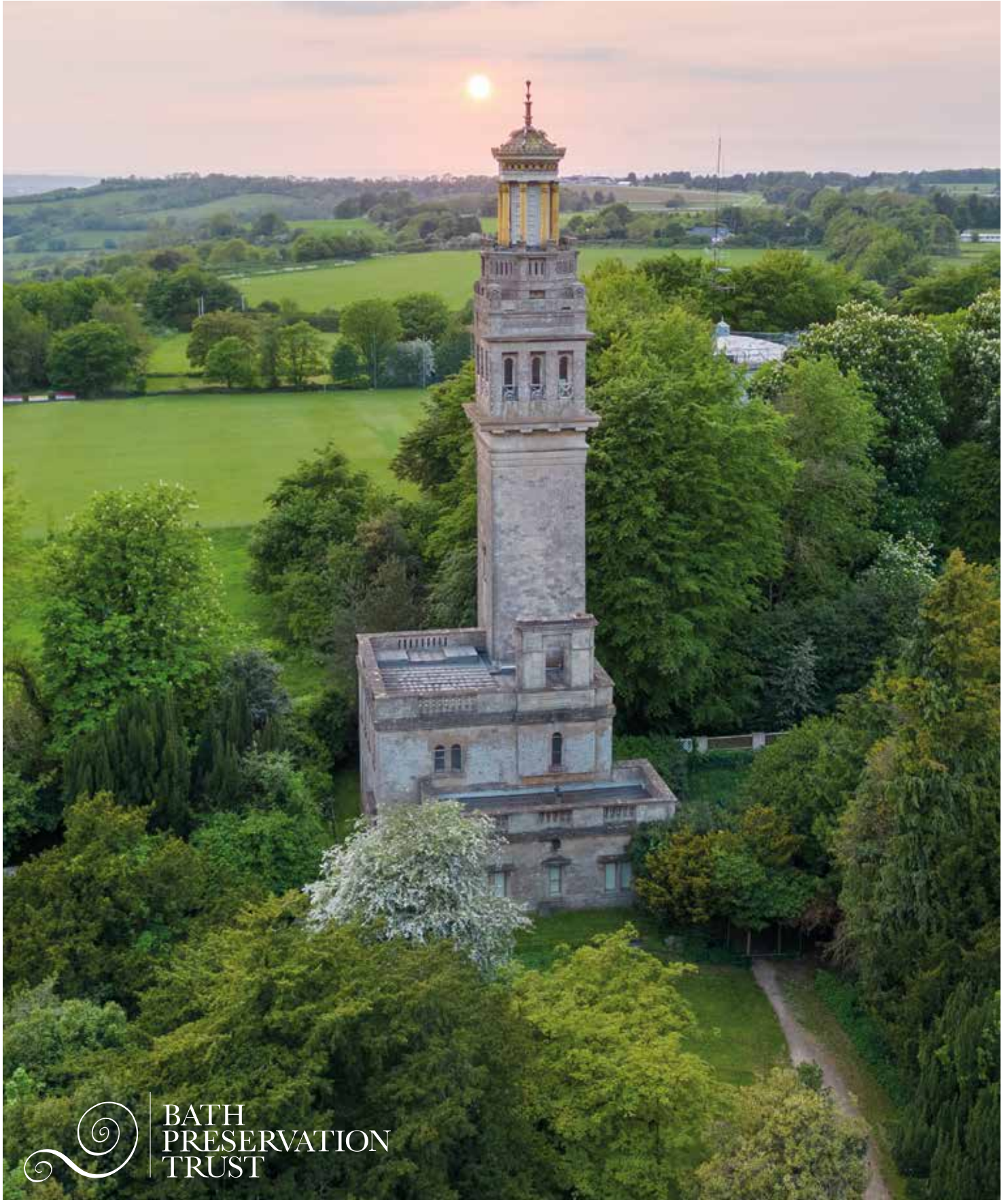


BATH MATTERS

THE BATH PRESERVATION TRUST NEWSLETTER

96



BATH
PRESERVATION
TRUST

Introducing our new Director of Museums

We are delighted to welcome Patrizia Ribul as our new Director of Museums.



Having served as Acquisitions Programme Manager at the Tate for 11 years, with a wider background working in a range of public and private/commercial organisations nationally and internationally, Patrizia brings a wealth of arts and heritage expertise to her new role at BPT. Most recently Patrizia has worked as Executive Director at the Burton at Bideford Art Gallery Museum, alongside a project management role at Spike Island Art Space in Bristol. Patrizia says: "I'm thrilled to be joining

the Bath Preservation Trust, leading these crucial organisations with such timely, pressing scopes of preserving history. It's a privilege to be part of the team showcasing Bath's rich heritage and culture, supporting education and engagement for both the people of Bath and its millions of visitors each year. I look forward to adding to BPT's vision to make culture and history accessible to all."

Welcoming Nicola Murtough

We were very pleased to welcome Nicola this summer as our new Communications and Admin Assistant. Nicola is the new port of call for all membership enquiries and administration, and she is also assisting with our marketing activities.



Give the gift of Bath Preservation Trust membership

Stuck for gift ideas with Christmas fast approaching? Bath Preservation Trust membership can be purchased as a gift – a thoughtful and long-lasting present for a friend or loved one with an appreciation for architecture, history and culture.

For more information on purchasing membership as a gift, please email membership@bptrust.co.uk.

Upcoming membership events

Please note that some of these events are still being finalised. Exact dates and times will be released as soon as possible through our events webpage and in our monthly newsletter.

10 January 2024: Buildings Reborn: a talk by Klas Hayllen (KHA) Architizer. Booking available via our website (this event is open to the public).

January 2024: Chair's Drinks at the Museum of Bath Architecture. Details and exact date to follow; please check our website for updates and to book.

March 2024: A special members only event at Beckford's Tower to celebrate our reopening. Details to follow; please check our website for updates and to book.

May 2024: Members Lecture. Details to follow; please check our website for updates and to book.

September 2024: Members Trip. Details to follow; please check our website for updates and to book.

In order to save paper and funds, we retired our occasional postal events bulletins earlier this year. Events continue to be listed in our biannual Bath Matters editions, and are posted to our website and in our monthly email newsletters.

To hear about upcoming member events and be the first to know when tickets are released, be sure to subscribe to our monthly newsletter and check our website regularly.

For help subscribing to our email newsletter please email membership@bptrust.org.uk.



Welcome to our autumn/winter 2023 issue of *Bath Matters*, and what an exciting six months it has been since our last issue. The capital works at Beckford's Tower are nearing completion, with an estimated reopening date of March 2024.

The main changes you'll have observed so far, if you've passed by the Tower, have been repairs to the external structure, including the restoration of certain external features, but we've also been working hard behind the scenes to prepare the new interpretation. Find out more about the exciting changes we're making to Beckford's Tower on pages 14-15.

The weather might have been a wash out this summer but our visitor numbers to No.1 Royal Crescent and the Herschel Museum of Astronomy didn't suffer for it; compared to summer 2022 our visitor numbers were up 3%

at No.1 and 19% at the Herschel, with revenue up 9% and 27% respectively. Our gift shop sales soared too, achieving 144% of target. The new Georgrope dressing up experience at No.1 has delighted visitors, providing a whimsical and engaging ending to their visits. The Herschel Museum has welcomed many "astronomy pilgrims" as always, many of whom have visited specifically to see our latest acquisition: Caroline Herschel's Memoir Manuscript. The *Conservation In Action* programme which we've operated across the organisation has given museum visitors a fascinating glimpse

behind the curator's curtain, raising awareness of what our work behind the scenes involves, and also how they themselves can get involved in conservation – for example, in helping to diminish light pollution. Read more about our future plans for No.1 and the Herschel on pages 12-13 and 16-17.

Thank you for your support and engagement with our activities and campaigns during this most exciting year. We can't wait to bring you with us as we continue our new ventures into 2024.



© Tom Burrows

Beckford's Tower: *Reopening March 2024*

After a year of extensive repairs and restoration to the exterior and interior of Beckford's Tower and the surrounding landscape, funded by a range of generous public and private supporters including the National Lottery

Heritage Fund and Historic England, we are currently on schedule to reopen in March 2024.

We would, of course, like our loyal members to be amongst the first to see the changes which they have helped us to bring about.

Advance tickets will be available to purchase from February 2024 – keep an eye on our website and social channels for details on how to book in due course.

Welcome



Comment from the Chair

BPT Chair Thomas Sheppard

For many hundreds of years, Bath has been a magnet for visitors who have found it a most attractive place to live and then, largely for the better, have changed what they found.

One of our earliest visitors (in about 500 BC) may have been King Bladud who, with his pigs, found the hot waters life changing and established a settlement. This theme was picked up by the Romans who created a recreational settlement around their bath houses with many of them choosing to stay and retire here. In the following centuries successive monarchs and clerics came and changed both the architecture and social importance of the city. In turn the Georgians demolished and changed the significant medieval city making it a place for their own recreation and creating the World Heritage site we now all enjoy.

Today we cope with over 6 million visitors each year and the city bulges as it tries to meet the many demands on its space. The city is an attraction for families because of our excellent schools and transport connections and we have well over 20,000 undergraduate students studying at our universities and competing for accommodation. As a destination, our independent shops, excellent attractions,

museums, entertainment venues, and restaurants all mean that Bath is a desirable, expensive, and busy place to live. As a third generation Bathonian I can understand the pull to live here.

All these good things create pressures on housing, public spaces, and the preservation of what makes Bath such a draw in the first place. Preservation is an activity of keeping something valued alive, intact, or free from damage or decay. At BPT, our vision is to preserve what is valued and to encourage a thriving, accessible, green, and liveable city. Our preservation does not frustrate change but influences positive change to give a better future for our city and the society, environment, and economy it supports.

As you might expect, BPT has never been busier as we comment on a growing number of planning applications as well as engaging with developers and planners to try to influence the design of the new buildings and comment on planning policy. Currently there are significant pressures both with development along the riverside to the west of the city and the precious green setting which forms part of our World Heritage designation. We need homes for key workers, first time

buyers, students, retirees; we need space for existing and new businesses, and we need to allow our universities to flourish. All of this must be done in a way which is appropriate to our World Heritage designation.

We also cannot avoid the challenge of climate change on the city. This is not just about zero carbon but also the impact of heavier rain and unpredictable weather. As an international recognised "set-piece" city we are well placed to take a lead to showcase how to tackle these challenges especially with the adaptation of existing listed buildings and BPT is putting itself in the heart of this debate.

This is my last contribution to Bath Matters as I stand down as Chair of Trustees this Autumn. I have been a trustee for almost twenty years, ten years with Michael Briggs and Edward Bayntun-Coward, and then returning in 2014 to become chair. It is always sensible to leave before you are asked, and I leave the Trust in very capable hands, in good shape, and well placed to contribute to the future of our city.

Thomas Sheppard

Next steps towards rewilding the night

This autumn, as longer darker and star-studded nights fell upon Bath's protected landscapes, BPT published a new *Dark Skies Position Statement* to help sustain our naturally Dark Skies and their importance for wildlife, human health and sense of place. Available to view on our website, the statement includes objectives and best practice measures for improving the Dark Skies character of Bath and its landscape setting. Published in collaboration with the Herschel Museum of Astronomy, the statement provides a consistent approach to achieving

high standards of design and a sustainable future for Bath.

BPT is willing to work with councils, community groups, specialist advisors and Historic England to achieve our Dark Skies objectives and we urge Parish Councils, B&NES Council and others to make use of this Statement when responding to planning applications and consultations. This is particularly important when dealing with matters concerning lighting within the City of Bath World Heritage Site (WHS) and its

landscape setting, including the Cotswold National Landscape Area of Outstanding Natural Beauty (AONB), green infrastructure, rural conservation areas, and areas of nature conservation.

With collective efforts, a Dark Sky city status, in conjunction with Dark Sky reserve status for the Cotswold National Landscape AONB, may be within reach.



Comment from the CEO

CEO Alex Sherman

Change is an inevitable and constant feature in so many ways, not least in the way that Bath changes and adapts according to need and the many demands on it, a trend which continues today with the city undergoing a relentless process of change and renewal.

Amongst the many varied and complex matters being dealt with are large-scale developments including Bath Western Riverside; the old Gasworks site which is earmarked for around 1,000 new homes. The site will contain a B&NES Council-led social, affordable, mixed housing development alongside the St William/Berkeley proposal. These developments have been the subject of some significant interest over the last 12 months or more, with development proposals being brought which are too big, too imposing and which need rethinking.

After many years of false starts and at least three abandoned previous proposals, plans for the Bath Rugby stadium on The Recreation Ground in the centre of the city have been submitted to B&NES Council planning department. Time will tell whether the plans brought forward will succeed in bringing change to this part of the city. BPT's position on the principle of development on the Rec has always been clear: 'rugby on the Rec, but not at any price'. We are open to the

opportunities for a new rugby stadium on the Rec and regeneration of the riverside but our primary focus will be the protection of the Outstanding Universal Value of the World Heritage Site and the impacts any structure would have on Bath, its heritage and its landscape setting.

The Local Plan and Green Infrastructure Plan are also being refreshed and will shape what change looks like for Bath over the next 20 years – a period of great uncertainty with the intensification of the climate and nature emergency and its impacts.

The constant amongst all this change will be the historic heart of Bath and its relevance and significance to people, forming the kernel around which the rest of the contemporary city has grown. However, these buildings must also change, develop and adapt to address the challenges and difficulties which will be faced by a rapidly changing climate.

Bath is a city of change and we continue to campaign for sustainable development, design excellence and positive adaptation, and the opportunities that well-thought-through change may bring.

Change is also inevitable with people, and our Chair, Thomas Sheppard DL, has recently announced his departure. For nearly twenty years, Thomas has been closely involved as a

Trustee; an advocate and committed supporter of Bath, its built environment and its important and vivid World Heritage. The hard work and endeavour which Thomas has committed to BPT has not only enabled us to be a thriving and enterprising charity but also one with plenty of opportunities, ambition and drive. Underlining his rigour and commitment, Thomas was also engaged, along with other Trustees, with the open process to find our new Chair, Eve Salomon CBE. A fuller introduction to Eve features later in this edition.

Further change comes in the form of our new Director of Museums, Patrizia Ribul, and I am delighted that BPT has attracted someone with such a strong career background in arts and culture. Patrizia will bring a determined and ambitious focus to the museums and will continue the trend of inclusion, diversity and excellence in practice.

I am sure you will join me in welcoming Eve and Patrizia to BPT. There will be many opportunities to meet them over the coming months, with more Member and public events and experiences lined up.

Alex Sherman

The resilient city

Join us and Bath's business community this winter for the *Rebalance Bath Festival of Wellbeing*. We are programming a series of talks exploring the resilient city and principles for more sustainable futures. The focus will be on socially and environmentally-responsible regenerative design, landscapes and architecture, and how places can enrich society and elevate environments for the wellbeing of people. Details will be made available via our website, mailing list and Instagram (@bath_preservation_trust) soon. The festival takes place from 25 January until 18 February 2024. Find out more at www.welcometobath.co.uk



Our big chance to secure a stronger more sustainable future for Bath

A new Local Plan for the B&NES district is being prepared. This is the Local Authority's mechanism for deciding how the district grows, placemaking, managing change, and protecting what we value. Housing need and land allocation for housing will be addressed through the Local Plan. Preparation is a long process which involves the public, communities and stakeholders, and provides us all with the opportunity to review and discuss issues facing the city and what we would like to do about them.



Now is the time to participate!

Participation in the development of the Plan enables people to influence future policy which will guide planning applications and shape the city. The key areas are:

- Responding to the climate and nature emergencies and creating a healthy, more liveable, sustainable and resilient, low carbon city.
- The approach to meeting the need for more affordable homes and jobs; and
- Priorities for improving places and quality of life, and enabling more sustainable lifestyles for all.

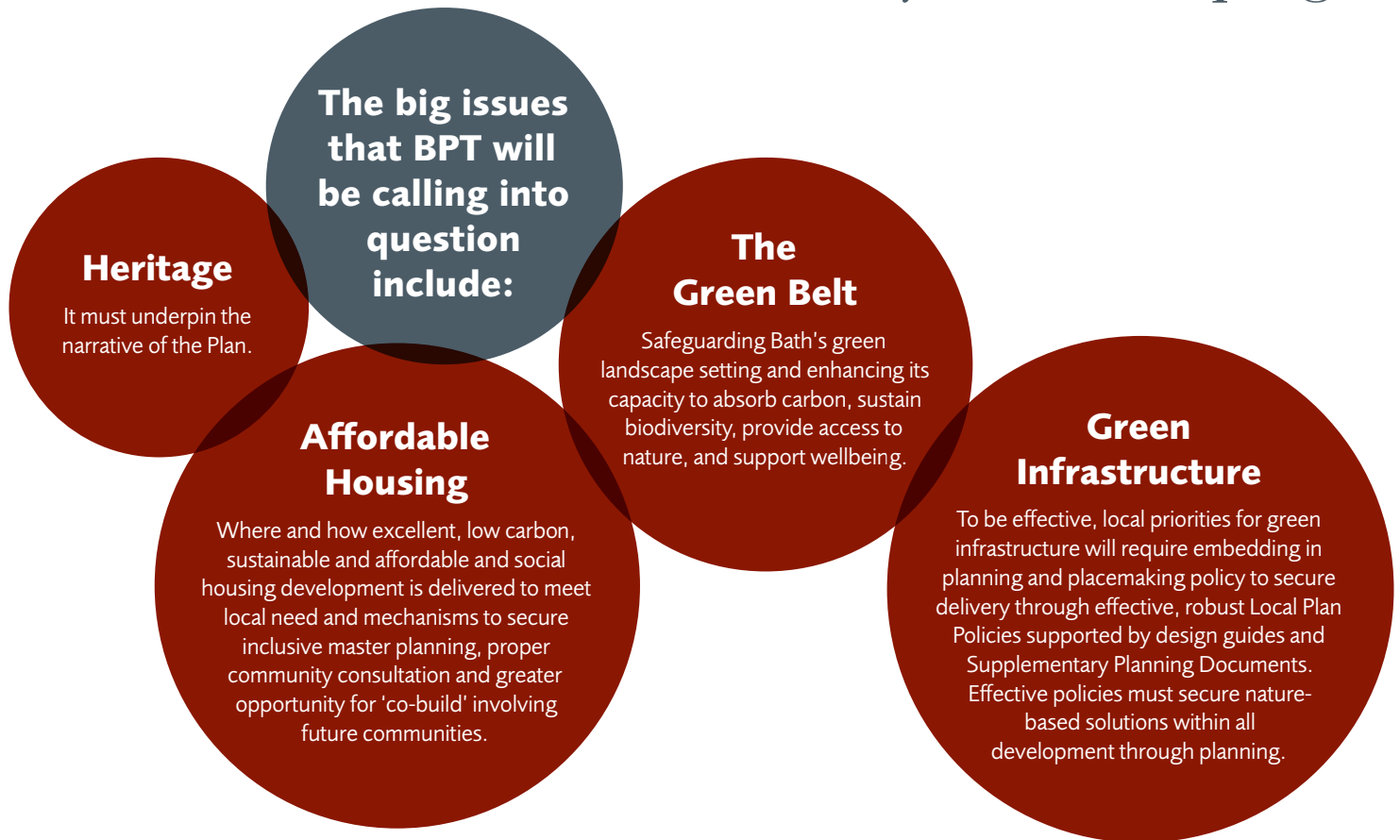
We want to hear from communities across the city and its rural setting about the future places they want to plan for or protect. If you or your community is preparing to engage with the Local Plan and want to find out what planning policies relate to your area and how these will be reviewed, please get in touch at conservation@bptrust.org.uk.

The Local Plan Options document (the first stage of consultation covering a range of planning issues and options for places, new homes and jobs) is now likely to be considered by B&NES Council Cabinet Committee on 18 January 2024 and subject to its approval will be

consulted on from early February to mid-March 2024. The Housing and Economic Land Availability Assessment (HELAA) will also be published so that it can be seen how it has been used to inform the proposed options for land use policy response, along with a variety of Topic Papers to more fully explain the rationale behind the options, with links to the key evidence. Stakeholders will be invited to review these to inform their comments on the proposed options.

This critical first stage of public consultation paves the way for future involvement and you are urged not to miss it!

Advocacy and Campaigns



Green Homes

This autumn a revived Green Open Homes event invited local people to explore the energy saving measures and technology installed in homes, discuss energy savings and improve understanding about improving the energy performance of their own homes.

The event on November 4th and 5th involved homes across the county with dozens of volunteers supporting visitors and providing advice and inspiration. Green Open Homes showcases a variety of housing types, including listed buildings, that have introduced a range of solutions from low-cost DIY methods such as draught proofing and smart power controls to more extensive options, such as heat pumps, wall insulation and triple glazing. In 2011, 2013 and 2014 BPT joined forces with Transition Bath and B&NES Council to run successful green homes weekends. This year we were joined by Buro Happold and Bath & West Community Energy (BWCE) who led the event. All resources are available on the Green Open Homes B&NES website www.greenopenhomesbanes.org

Alongside these inspiring Open Homes, a new *Green Heritage Homes* project aims to increase the rates of sensitive retrofitting within historic buildings by increasing knowledge and confidence amongst householders and

professionals. The project aims to demystify retrofit opportunities and conservation principles and promote retrofit that saves energy, responds to the technical needs of the building and sustains the important significance of heritage assets. Working with a broad array of advisors (including retrofit providers, built environment professionals and Conservation Officers) and with creation of new mechanisms embedded in retrofit assessments for homes (including in relation to embodied carbon), the project will share resources and guidance through face to face advice, events, surgeries and specialist training for householders and professionals. This will include engagement with landlords of listed building properties, and the piloting of a new pre-application process at the very start of the retrofit journey to inform householders as they consider which measures to pursue.

Green Heritage Homes is a partnership project managed by BWCE in collaboration with B&NES Council, BPT and the Centre for

Sustainable Energy (CSE) in liaison with People Powered Retrofit (PPR) and the world-leading built environment faculty at the University of Bath. More details will be available via BWCE soon.



Planning applications at a glance

Full and detailed responses to planning applications and consultations are available online

The Rec

Bath Rugby submitted their planning application for new facilities on the Rec in September. Permission is sought for an 18,000-capacity contemporary stadium for Bath designed by architects Kay Elliott and a new café and landscaped public realm along the riverside. BPT's position on the principle of development on the Rec has always been clear: 'Rugby on the Rec, but not at any price.' We are open to the opportunities for a new rugby stadium on the Rec and regeneration of the riverside but our primary focus will be the protection of the Outstanding Universal Value of the World Heritage Site and the impacts any structure would have on Bath, its heritage and its landscape setting. Please refer to our website for updates on the application and BPT's submitted response.

Western Riverside Gasworks Site

BPT is engaged with planning applications submitted by St William Berkeley and B&NES Council for the development of the former Gasworks site. Amendments to the St William Berkeley scheme were submitted to reduce building heights and reconsider the development's material palette and finish, in line with our previous comments. The developer claimed it would not be viable to provide affordable housing. BPT supports the regeneration of the whole site to provide a mix of housing. In response to B&NES Council's proposed scheme for up to 351 homes on the western half of the site, we have highlighted that the proposed buildings of up to 8 storeys could be visually detrimental in views across the World Heritage Site, and would be contrary to the council's own guidance on Bath building heights. Both applications are pending determination at the time of writing.

Proposed Lidl Superstore

BPT has engaged in two rounds of pre-application consultation for proposals for a new Lidl superstore on London Road. In response to our consultation comments, the development design was revised to reduce the building's height, and simplify its appearance within both its landscape and immediate streetscape setting. A planning application submitted this year raised heritage concerns as it did not provide enough information to enable a proper assessment of the degree of harm to the World Heritage Site and its landscape setting. The anticipated impact of development on traffic congestion and the vitality of the Larkhall local high street risks harm to the character of the area. BPT has further questioned the effectiveness of the proposed ecological enhancement measures. The application is pending determination at the time of writing.

Phases 3 & 4 of Sulis Down

Proposals for further development without a fit-for-purpose masterplan have been met with local opposition. Amendments have included the relocation of all allotments from Derrymans Field to the Phase 3 site, the reduction of the number of homes proposed from 300 to 290, and the site-wide reassessment of energy efficiency measures to meet updated Local Plan requirements. Despite the benefits of incorporating the allotments within the development site, BPT raised ongoing concerns about the disproportionate balance between the built development of the site and provision of public green space, contrary to Garden City principles. The lack of a comprehensive masterplan fails to comply with local policy requirements.

Waterworks Cottage

The demolition of the 19th century Waterworks Cottage was approved as part of a revised planning application for the development of two contemporary dwellings. The Cottage is a locally important Non-Designated Heritage Asset (NDHA), which BPT emphasised is more sustainable to reuse. Councillors voted to permit the scheme at Planning Committee, and felt that it would deliver well-designed local housing.

Comfortable Place, Upper Bristol Road

BPT has pushed back on the failure to provide affordable housing in new residential-led developments. Proposals for apartments at Comfortable Place were permitted in 2018 with 32% discount market housing. However, a recent amendment has claimed it would be unviable to provide any affordable housing. BPT challenged the designing-out of affordable housing and highlighted the lack of robust evidence provided to justify 0% provision. It is critical to secure the maximum amount of affordable housing on development sites within the City to address the housing crisis. The application has since been withdrawn.

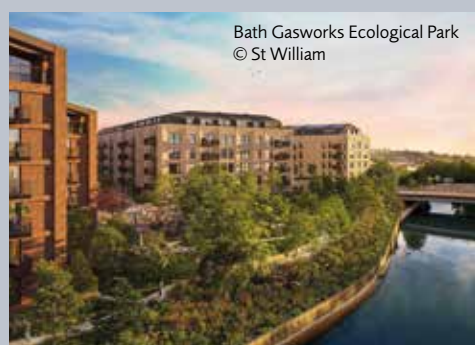


Beckford's Ride & Nursery Gardens

BPT successfully campaigned with local residents against the development of a new dwelling on the Grade II nursery gardens formerly associated with the historic landscape of Beckford's Ride. Planning permission was refused on grounds of harm to the setting of the listed structures, and the setting of the Conservation Area and World Heritage Site. The Conservation Officer summarised an in-principle objection to any residential development on the site.

Charmydown Barn, Swainswick

Revised proposals for the residential conversion of the curtilage Grade II listed Charmydown Barn and associated landscaping works. BPT was unsupportive of the works which have caused substantial harm to a group of interconnected historic buildings and the landscape setting of the Cotswolds Area of Outstanding Natural Beauty (AONB), and called for prompt enforcement action.



Architecture, Planning and Place



Unit 1-4, Wells Road

Co-Living Apartments, Wells Road

In response to BPT's concerns, the height of a proposed 'co-living' building has been dropped by a storey. However, development would still result in visual harm to the landscape setting of the World Heritage Site and the setting of the Grade II* listed St James' Viaduct. BPT has questioned how this type of accommodation would be accessible for its target audience of young professionals without any affordable housing.

Former Fuller's Earthworks

BPT responded to resubmitted proposals for land re-profiling works at the former Fuller's Earthworks. Whilst the proposed ecological enhancements would be positive, we raised concerns with the potential contamination of existing earth mounds on the site. The development did not appropriately consider any resulting impact on the adjacent Site of Nature Conservation Interest (SNCI), and the landscape setting of the Green Belt and Cotswolds AONB.



Malthouse

Energy Retrofit of Historic Canal Warehouses

BPT supported proposals for the energy retrofit of two Grade II listed 19th century industrial buildings along the Kennet and Avon Canal including measures such as slimline double glazing and internal insulation. Proposals at the Malthouse incorporated the innovative use of solar slates to generate on-site renewable energy whilst aiming to blend in with the building's traditional use of natural roof slates. Both applications were granted listed building consent.

Deadmill Lane

Further revised proposals for the construction of two new dwellings, reduced in height to one storey with the addition of green 'living' walls and roofs were refused as inappropriate and unjustified development in the Green Belt. BPT has successfully maintained an in-principle position against any development on this Green Belt site on the edge of Larkhall.

We've had our say

- BPT engaged with the second stage of community consultation to improve parks and green spaces in the Foxhill area of Bath. Given the significance of green spaces post-pandemic, opportunities for improved access, connectivity, and ecological enhancements were strongly supported. We commended the ongoing involvement of the local community.
- B&NES Council called for public views on changes to the Clean Air Zone (CAZ) Charging Order 2021, to introduce charges for certain types of HGVs. BPT supported the need for charges where HGVs are damaging to the historic environment and responsible for high levels of carbon emissions, but felt the proposed daily charge should be higher.
- This year the Government launched a national consultation seeking feedback on potential options for managing holiday lets through a new registration scheme. BPT agreed that the planning system could be used to control the creation of new holiday lets with a new C5 use class, but further provision should also be made for other types of short-term lets such as student housing, as well as second homes.

Your matters

Dear BPT,

Virgin Media recently undertook some work for a property on South Parade in Bath. Whilst most of their work is generally dreadful, the completed works as viewed on site suggest a new low. Is there an approved installation method for these necessary communication cables, or a document that you could refer me to please? And is any permission required to drill holes in listed building walls for these works?

Resident, Bath

We'd love to hear your views and queries on heritage and planning issues that matter most to you.

Please write to us at
conservation@bptrust.org.uk
or call **01225 338727**



Our response

The Local Planning Authority (LPA) would advise that listed building consent is typically required where any installation works of cables or fibre/broadband boxes would affect the character of a listed building.

If you're unsure, we recommend getting in touch with your LPA's conservation team to discuss whether a listed building application is required. B&NES Council LPA encourages engagement with their planning and conservation team where installation of infrastructure, including structures such as cabinets and poles, would be a) close to/affecting the setting of a listed building; b) in historic surfacing; or c) in sensitive locations in the conservation area.

BPT has published a guidance note 'Broadband and Fibre Infrastructure Installation on Listed and Heritage Buildings' which is now available on our website, which sets out best practice guidelines for fibre upgrades and broadband installation, including any associated infrastructure such as cabling or fibre boxes/cabinets.

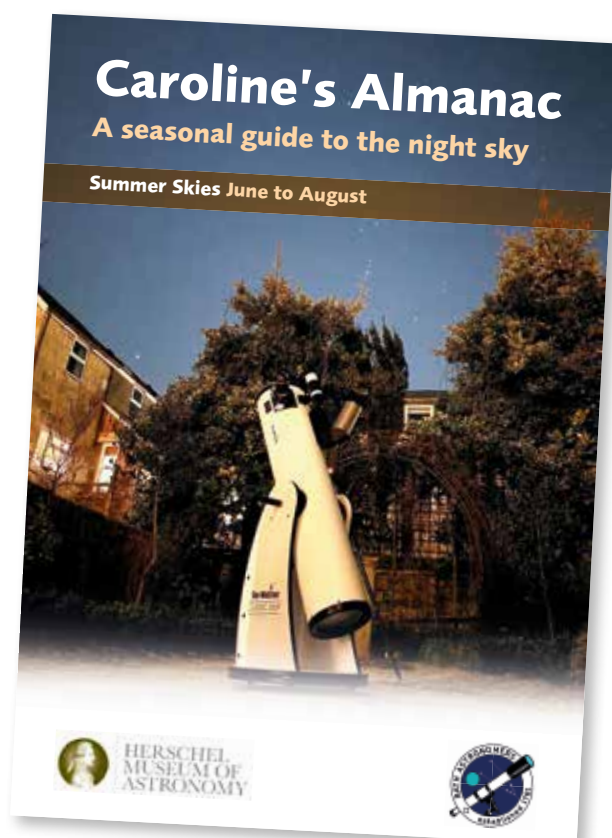
Learning and Engagement

Autumn astronomy

The temperature might have dropped but the longer nights mean more opportunities for star-gazing from the garden at the Herschel Museum, so we are pleased to welcome in the autumn and winter seasons.

While darker skies haven't necessarily meant clear skies, nevertheless we have been enjoying several astronomy sessions with Bath Astronomers so far this autumn, including looking for the planet Uranus on William Herschel's birthday. We are also excited to celebrate Caroline's achievements in December – keep an eye on our website for booking information.

For those visitors who have been inspired by the Museum to take up astronomy we have created four seasonal guides to help identify the most exciting things to look for at different times of the year. Created with the help of Bath Astronomers this four-part almanac explains ice clouds, meteor showers, deep space objects, planets and constellations. These new star-gazing guides are available to download on the website or to pick up in the Museum.



The cover of one of our new seasonal star-gazing guides

"Starseekers – Beyond the Museum walls"

We were delighted to accept a small grant from the Institute of Physics for our "Starseekers – Beyond the Museum Walls" project. The aim of this project is to encourage young people to engage in astronomy and in particular to reach out to groups who are currently under-represented in the Physics community.

We are working closely with the Percy Community Centre to engage with their youth groups by running planetarium sessions, astronomy workshops and activities. We are also partnering with the University of Bath to run live streaming sessions from their observatory to the Museum star vault. Fingers crossed for some clear skies!



Learning and Engagement

Schools and outreach

Despite the challenges faced by schools we are seeing a steady flow of educational visits to our museums. Our workshops at No.1 Royal Crescent have been reviewed and updated so children can now enjoy dancing in the Servants' Hall as they prepare for a party, create their own plasterwork designs inspired by Georgian design and architecture, and 'build Bath' with our giant floor map. To those schools who have found the rising costs of travel a barrier to visiting we are now able to provide support thanks to a generous donation from the Orseis Trust.

Our Beckford's Tower team have also been busy creating and trialling new workshops ready for re-opening in March. Schools will be able to take part in a mixture of self-led and facilitated workshops exploring William Beckford's identity and the landscape around the Tower.

It's not just schools that can experience our museum workshops: Beavers, Cubs, Scouts and Brownies groups can work towards their badges with the support of our learning team.

Family fun

As always, there is plenty for families to enjoy whenever they visit one of our museums.

We recently added a brand-new trail to our offering at No.1 Royal Crescent – specially created for our Jane Austen experience. This trail was designed by Kitty Hawthorn, a Heritage Management student intern, with the support of the learning and curatorial team.

Building on the success of our summer workshops with the team at Bath Share and Repair, we will be inviting them to run more sewing and craft workshops at No.1 – creating draught excluders to help keep homes warm, and creating fabulous costumes out of scrap material. Check our website for details of these and other family events.

At the Herschel Museum we are looking forward to teaming up with the Museum of East Asian Art for special events and festivals including Lunar New Year.



Masquerades, music and mice – Christmas at our museums

It's party season in Bath and visiting children can get themselves ready by creating their own masquerade mask. This drop-in event will be available for free with museum entry throughout the Christmas season.

Back by popular demand, the family of country mice will be returning to No.1 for Christmas this year. Families can have fun spotting these friendly little visitors in each room and can even pop into the shop to buy one of their own.

The family of country mice return for Christmas

No.1 Royal Crescent



Visitors have fun in the new Georgrobe

The Georgrobe is a hit with regency lovers

Open until
the end
of 2023

You don't have to be a fan of Jane Austen or Bridgerton to enjoy a little bit of regency dress-up – but it probably helps!

Since our new dressing up experience "The Georgrobe" launched in April 2023 we've welcomed up to 100 people per day coming to

try on costumes and take selfies in front of the specially-designed wall mural, generously sponsored by HomeLets Bath.

Museum late openings

This summer we opened our doors after hours, enabling our visitors to wander the twilight museum and take in the story of the house from a fresh perspective. In addition to this we offered refreshments in our Servants Hall, with the option to enjoy these in our courtyard as the sun went down. Our courtyard provides a wholly unique view of the Royal Crescent, made all the more enticing with the arrival of sunset.



Gift shop news

We were thrilled that our on-site gift shop was short-listed for the prestigious Museums + Heritage Awards this year, a huge achievement and testament to the work our team have put in to expand and grow our shop offering over the past year. Do pay us a call whenever you are nearby as our range continues to grow and expand, with a variety of new books for children and adults, new children's toys and games and fabulous new gifts for Austenites and history buffs.



The No.1 Royal Crescent gift shop

Christmas

We have some exciting festive plans at No.1! The house will, as always, be resplendent with Christmas finery, including a fabulous tree outside the front of the house, kindly sponsored by our friends at Hawker Joinery again this year.

We'll be running our "Twelve Tales of a Georgian Christmas" audio-visual tour throughout late November and December, to immerse our visitors in all things Christmas. Father Christmas will be making a welcome return at weekends throughout December to delight children and adults alike in his grotto.

Our gift shop will be stocked with all things Christmas and for one day only we'll be taking our enchanting shop offering onto the streets of Bath as we'll have a stall at the ever-popular Bath Christmas Market. Make sure you pop along to our chalet on Milsom Street on 1st December for lots of fabulous gift ideas and a large dose of Christmas spirit!

We will also be hosting private Christmas parties in our Servants Hall, with access to our courtyard to enjoy a glass of something in the cool, crisp winter evening. If you or your business are searching for a party venue, then look no further and drop our events team an email at events@bptrust.org.uk. We look forward to hosting you!

Welcoming our new Museum Assistants



Our Museum Assistants make the magic happen, and we were pleased to grow our team with two new recruits this summer: Mia Parry (far left) and Eve Miles (left).

Accessible tour and museum app

We recently upgraded our accessible tour with new software. This enables visitors with accessibility needs to explore rooms they may not be able to physically access via 360° photography and subtitled versions of our museum audio visual experiences.

We have also moved our existing QR code system onto the Bloomberg Connects app. This app is free to access, more user-friendly and enables our visitors to immerse themselves in even more information about the house and our collection. It can be accessed before, during or after a visit.

Beckford's Tower and Museum



Fixing the Tower!

In May we appointed Emerys, a highly regarded Bath building company, to carry out repairs and development work to the Tower.

Residents from right across Bath will have seen a huge white monolith appear on the Bath skyline recently – the scaffolding and its covers which now completely shroud the Tower. For those of you interested in the construction of the scaffolding you can view a short 2-minute timelapse video via the news section on our website. Beneath these covers the team is hard at work restoring the Tower and modernising the two museum rooms. Work is also taking place to open up some never-before-seen spaces at the Tower, including a new walkway on the first-floor roof, level access to a vault beneath the Tower, and the recently excavated Grotto Tunnel at the far end of the landscape. We hope to reopen to visitors in spring 2024 and can't wait to see you then!

Future proofing

Here at BPT we are fully alert to the climate emergency and keen to take the lead where we can. At Beckford's Tower we are introducing two new sustainable energy systems, including a brand-new Air Source Heat Pump to replace the oil-fired heating system, and an array of solar panels on the flat roof to generate solar power. When the Tower reopens in spring 2024 you will also be able to spot a large number of bat and bird boxes attached to the trees, a new pathway from the Grotto-end of the landscape, and a wildflower meadow and benches, where you can stop and enjoy the stunning view.

Holding conversations

Over the past two years we have been speaking to as many people as possible, from a wide range of backgrounds and communities, to understand how best to tell the complex and complicated story of William Beckford. We have listened and learned so much from these conversations and we are truly grateful to everyone who has given us their time and energy. If you want to be a part of the continuing conversation it is not too late, and you can email Michelle Williams (our Project Manager) on mwilliams@bptrust.org.uk to get involved.

Beckford's Tower and Museum



The power of music and dance

Words are one way to tell Beckford's story, but music and dance are another. We are continuing to work with celebrated dance group, State of Trust, who are creating a performance based on the award-winning book, *Cane Warriors*, by Alex Wheatle. This will tell the often overlooked story of Tacky's Rebellion in Jamaica, which involved a number of enslaved Africans from one of Beckford's plantations. It will be performed live, for the very first time, at Beckford's Tower in March 2024. Details of how to get tickets will be made available on our website and social media channels in due course.

Alex Wheatle, author of *Cane Warriors*

Adding to the collection

We are very grateful and honoured to have received two bequests recently, which will greatly enhance our collection.

One was from the Estate of Philip Hewat-Jaboor, who has been a long-term supporter of Bath Preservation Trust and will be greatly missed. The bequest includes several printed books that will be on display when the museum reopens, including rare first editions of Beckford's gothic novel *Vathek*. The second bequest was from Beckford Society Treasurer Jane Wainwright, who generously gifted her collection of Beckford books and the research archives of the late Clive Wainwright to the Tower. Clive was one of the first people to extensively research Beckford's collection, tracking down objects in other museum collections and attributing Beckford objects and furniture. His work led to the 1989 publication of *The Romantic Interior: The British Collector at Home, 1750-1850*, which continues to be one of the most essential works for exploring the interiors and collections of the 19th century. The addition of the Wainwright Archive to the research papers of Dr Bet Mcleod gifted last year, and the aforementioned Philip Hewat-Jaboor Beckford archive, now makes the Tower's archive the most extensive resource for anyone researching William Beckford's collection. We hope to catalogue the archive and make them available for public research over the next year.



The Tower's archive is now the most extensive resource for anyone researching William Beckford's collection

Herschel Museum of Astronomy

Seasonal events and activities

Throughout the year our team hold a range of family-friendly activities and events in conjunction with our various partners.

Summer Solstice

On 21 June, the day of the Summer Solstice, the Herschel Museum and Bath Astronomers held a solar observing event from our back garden, which allowed visitors to safely observe and learn all about the sun, and the Herschels' studies of it.

Tanabata Star Festival

The Herschel Museum collaborated with the Museum of East Asian Art (MEAA) to celebrate Tanabata, otherwise known as the star festival, on 7th and 8th July 2023, with joint activities and a special shared ticket discount. Activities included star origami, constellation postcards, and making traditional wishing strips that could be hung on display at MEAA and the Herschel Museum garden. We also ran an exclusive online prize giveaway.

"Wonder Women of Science"

Bath Uni Workshop

The University of Bath visited the museum on 8 August to run a special "Wonder Women of Science" event. Children enjoyed a themed scavenger hunt around the museum, and spent time creating a banner inspired by Caroline Herschel and other inspiring women of science, which will be displayed in the University's library!"

Planetarium shows

During August we invited families to experience the wonder of space through the unique immersive experience of the museum's planetarium shows with the Space Detectives, held at the Percy Community Centre.

Summer Sundays

In conjunction with Bath B.I.D, Bath Astronomers and the Herschel Society, we ran a 'Summer Sundays' day-time event on York street on Sunday 13th September. 11a York street was taken over and gazebos were set up on the street to introduce the public to the Herschels and space, including the opportunity to do some solar-gazing through telescopes, take part in space crafts, and watch mini science demonstrations.

Summer Sunday event in Bath



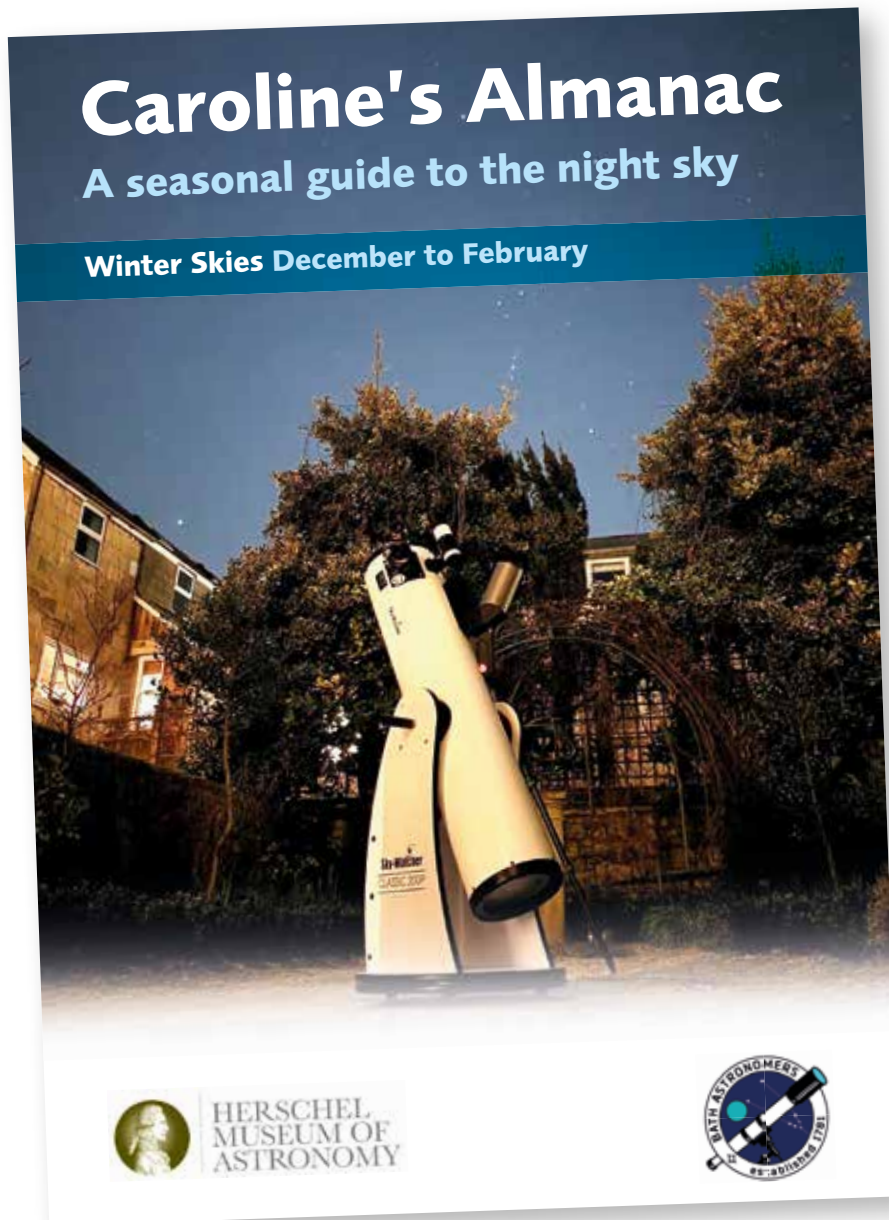
Herschel Museum of Astronomy

New gift shop stock

Everyone wants to take a little bit of space home with them! We've recently replenished our shelves with new stock including books, games, keyrings and other items – perfect for filling those Christmas stockings.

New Bloomberg Connects app

In July this year we joined the digital app 'Bloomberg Connects', a free arts and cultural app from Bloomberg Philanthropies. The app enables our visitors to experience the museum and its collections through visuals, audio, and text, which can accompany a visit or can be used before or after at home. There are child-friendly sections and it also translates into 40 languages.



Seasonal stargazing guides

The museum collaborated with Bath Astronomers to produce 'Caroline's Almanac', comprising four separate seasonal guides to the night sky, giving visitors advice and tips on what to see in the sky during the spring, summer, autumn and winter months. These are all accessible via our website, or printed copies are available at the museum reception.

One of the new 'Caroline's Almanac' stargazing guides

Upcoming events

Lecture by Philippe Blondel
Space debris: hazards
December 1 @ 7:30 pm – 9:00 pm

Don't miss the last in a series of four talks on Conserving the Planet in partnership with the Herschel Society and BRLSI. This talk will present the current situation, from space collisions to intentional creation of space debris, the approaching Kessler Syndrome and the geopolitical context, in Earth and beyond. Drawing on the speaker's direct experience, we will then look at technological solutions and policy implications. Visit our website to book.

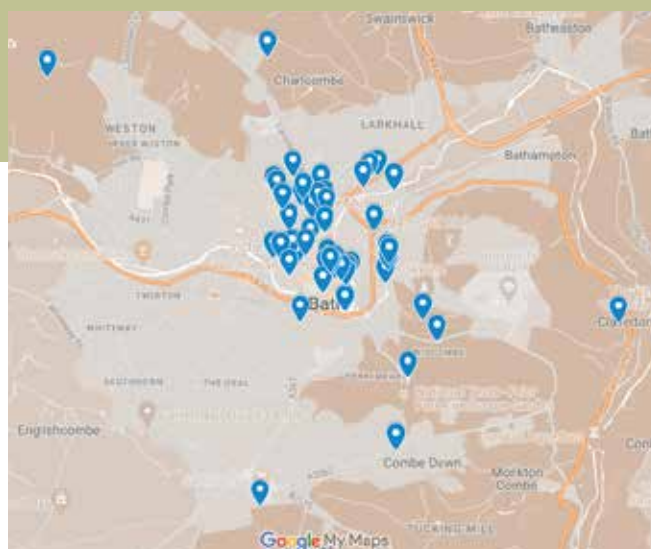
World Heritage Site Enhancement Fund

Recent projects

Bird's Eye View

A new interactive map of Bath will allow users to explore projects supported by the World Heritage Site Enhancement Fund. Users will be able to browse the map and find out more about Bath's eclectic heritage, as well as the special features which contribute to its dual World Heritage inscriptions. The map will include projects completed since 2012 onwards and will continue to be added to as projects are recorded.

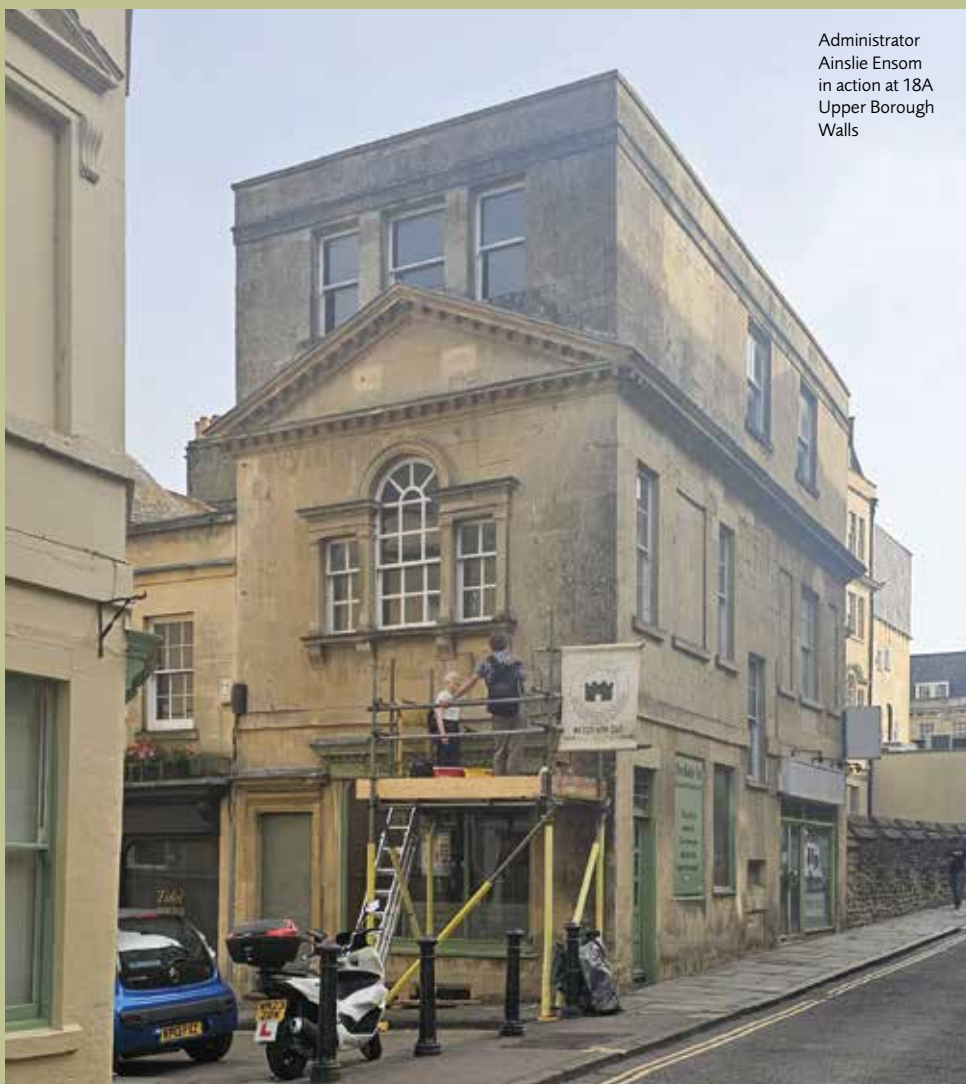
You can explore the map via our website.



Interactive Map Credit @GoogleMaps

World Heritage Enhancement Fund

The restoration of painted and incised street signs continues with 12A North Parade, 14 North Parade, 15 New Bond Street, 18-18A Upper Borough Walls, 1-2 St Michael's Place and 1 Macaulay Buildings, including the incised parish signs on Upper Borough Walls associated with the north-west limit of the medieval city and part of the boundary between the parishes of St Peter and St Paul (Bath Abbey), and St Michael's. Conservation and repair is currently being undertaken by Iain Cotton, including the cleaning and sensitive stonework repair of the incised lettering. The street signs will be painted in a black Keim paint where there is historic evidence that these have been painted.



Administrator
Ainslie Ensom
in action at 18A
Upper Borough
Walls

For more information about the Bath World Heritage Site Enhancement Fund, or to propose a project for support, please contact the Fund Administrator, Ainslie Ensom, at whsef@bptrust.org.uk

Introducing Eve Salomon CBE – our new Chair.

Last year I moved from London to Bath, but I don't feel myself to be a newcomer as the move has been a 'coming home' and return to the beloved city of my university days. And now, as your new chair at BPT, I have the chance to contribute to the well-being and development of the city that is now my home.

"Like our outgoing chair, Thomas Sheppard, I am a solicitor by background but my professional expertise is in international media and digital law where I work persuading governments to apply international standards, often in fairly challenging environments. I also chair an international legal research institution, and do some executive coaching. I am motivated by applying my skills to make for better outcomes for people and communities, which is why I work in the areas I do and why I devote considerable time to charities.

Having chaired the Regulatory Board of the Royal Institute of Chartered Surveyors for 6 years, I am familiar with many of the considerations of protecting the built environment. More recently, as chair of the Horniman Museum in London, I was responsible for the maintenance of a landmark Grade II Listed building, its gardens, and the design considerations for our various substantial capital projects. We also won the prestigious Museum of the Year Award in 2022, just before I finished my 8 years at the museum. I was awarded a CBE for my contribution to arts and heritage. On a personal level, I have

jumped through the hoops of getting planning permission for a Grade II home, and currently live in one of Bath's Grade I properties.

I share BPT's ambitions to be a regional/national centre of expertise for sustainable development of heritage sites. Having chaired a number of not-for-profit organisations, with experience of both the built environment and museums, it will be a privilege to contribute to the success of such a professional, effective, and values-led body as BPT. I am already greatly impressed by the enthusiasm and skills of its staff and the commitment of its board. I have very big shoes to fill in the departure of Thomas from our board, and on behalf of BPT would like to thank him for his many years of dedication and service. He will be greatly missed.

I will be relying on all of you, our members, to guide me to where you feel our priorities should lie. I very much looking forward to meeting as many of you as possible in the coming months."

Eve Salomon, CBE



Finally: Thank you

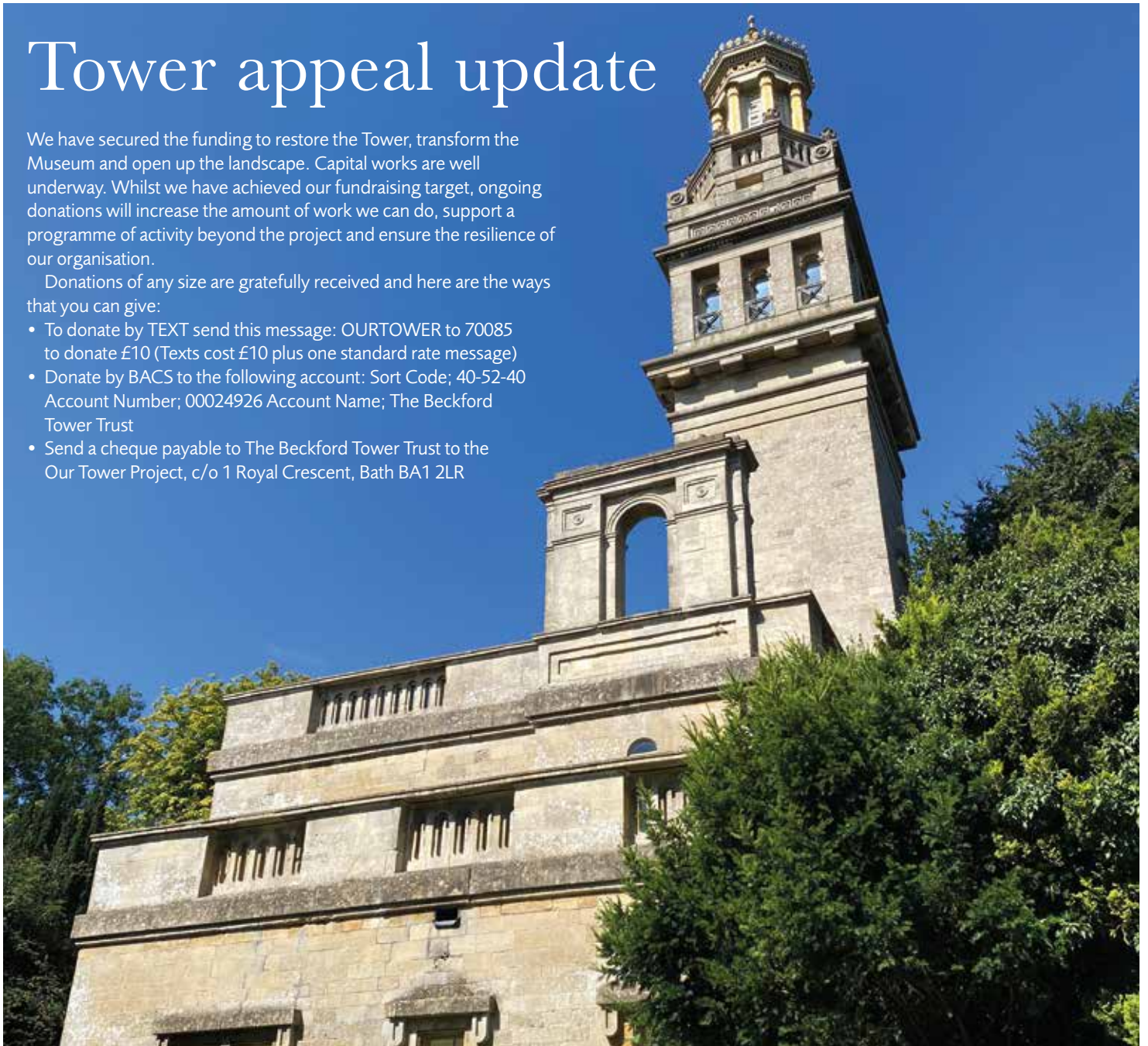
We would thank all of our members for your ongoing support. We continue to receive more and more enquiries from people who want to find out more about making changes to their homes, particularly with regards to retrofitting. We are always on hand and happy to respond, and we also have a range of useful resources available on our website. There will be plenty of opportunities to meet our new Chair Eve over the coming months, including at the Chair's drinks event in January.

Tower appeal update

We have secured the funding to restore the Tower, transform the Museum and open up the landscape. Capital works are well underway. Whilst we have achieved our fundraising target, ongoing donations will increase the amount of work we can do, support a programme of activity beyond the project and ensure the resilience of our organisation.

Donations of any size are gratefully received and here are the ways that you can give:

- To donate by TEXT send this message: OURTOWER to 70085 to donate £10 (Texts cost £10 plus one standard rate message)
- Donate by BACS to the following account: Sort Code; 40-52-40 Account Number; 00024926 Account Name; The Beckford Tower Trust
- Send a cheque payable to The Beckford Tower Trust to the Our Tower Project, c/o 1 Royal Crescent, Bath BA1 2LR



BATH
PRESERVATION
TRUST

bath-preservation-trust.org.uk
admin@bptrust.org.uk
+44 (0)1225 338 727

We are a membership organisation and a registered charity.

Registered office: The Bath Preservation Trust Limited,
1 Royal Crescent, Bath BA1 2LR

Registered in England no. 294789, Charity no. 203048

Design: www.ninepoint.co.uk

Print: www.kolorco.com



@Bathprestrust
@no1Museum
@MuseumBathArch
@BeckfordsTower
@HerschelMuseum



@bath_preservation_trust
@No1royalcrescent
@batharchitecture
@beckfordstower
@herschelmuseum