

# BATH PRESERVATION TRUST SPRING NEWSLETTER 2012



## CONNECTING WITH OUR SUPPORTERS



Hoardings round No.1A Royal Crescent

I am not, myself, a Twitterer or a Facebook-man, but it is undoubtedly the case that these new forms of media transform the rate at which information gets 'out there'. More than once the Trust has been contacted for a news story because a journalist has picked something up on BPT's Twitter-feed. Many members were appreciative of the chance to give us instant feedback by email on the debate about Bath's gasholder. The fact that the Trust can do this, as well as communicate in more familiar ways, seems somehow a good metaphor for the Trust's own purpose which is to treasure and protect the past, but also look to the future.

We have so much to tell you all, these days, that sometimes our print finds it hard to keep up. 2012 started with the excitement of the hoardings going up around No.1A Royal Crescent and work beginning on the first phase of our exciting and transformational project for the Museum. This continues to occupy much of the Trust's time, not least in continuing to focus on fundraising for the next stage of the project involving No.1 itself. But this does not mean we are losing sight of other Bath matters. As this newsletter shows, there is much going on 'across the piece' and we look forward to sharing it with you all, by whatever means you care to engage with us.

**Edward Bayntun-Coward - Chairman**

## 2012 - A YEAR OF ANNIVERSARIES

**Caroline Kay - Chief Executive**

2012 looks to be a year of anniversaries, celebrations and transformation – what with the Olympics and Paralympics, the Jubilee, as well as the more sobering 70th anniversary of the Bath blitz, all of which will be marked in some way by the Trust's museums.

In December 1987, 25 years ago, Bath was inscribed as a World Heritage Site. A number of events will be celebrating that accolade, starting with World Heritage Day on 22 April; but perhaps the greatest celebration is that there is now a better understanding both of the value of this status to Bath and the need to protect it. World Heritage Sites are indicated as having 'the highest level of significance' in the new National

Planning Policy Framework, a blueprint for planning which is a substantial improvement on the controversial first draft put out by the Government last year.

In fact the modifications to the NPPF give one hope that campaigning really can make things happen. While the four million members of the National Trust may have carried a little more sway than the 1400 members of the Bath Preservation Trust in demanding change to this planning blueprint, it nevertheless emphasises that membership organisations with strong campaigning messages for their communities can still make a positive difference.

### DATE FOR YOUR DIARY - BPT ANNUAL GENERAL MEETING

BPT's Annual General Meeting will be held at the Building of Bath Collection, on Wednesday 27th June 6.00 - 8.00 pm.

## THE WHOLE STORY PROJECT UPDATE

Nicola Watt - Project Co-ordinator

Claire Owen - Fundraiser

Since January there have been some significant steps forward in *The Whole Story* Project, not least because Ken Biggs Contractors started working full-time on the 1a site, which is owned by the Brownsword Charitable Foundation. Visitors to No.1 can see the reinstatement of Venetian windows in the south and east rooms, and can read about some of our plans for the re-opened Townhouse on the site hoardings. Further, the package of works for the development of No.1, funded by the Heritage Lottery Fund, is at present out for competitive tender, and we hope to have a contractor on board by the end of April to help inform the detailed design process for No.1.

Archaeological investigations and paint research have been ongoing throughout this period. Lisa Oestreicher, Historic Paint Researcher, has discovered that some original paint in No.1, survived the extensive restoration works in the 70s, and is now being analysed.

The Interpretation Group continues to meet fortnightly, developing the detailed designs, overseeing the review of the Museum's existing collection and making acquisitions for the future collection. Recent purchases include a late 18th-century pocket refracting telescope from well-known maker Jesse Ramsden of London for the interactive Gentleman's Retreat, where a display will allow visitors to experience the Enlightenment and to share an 18th-Century gentleman's interest in science and discovery. In addition, Mr Sandford's bedchamber is now partially furnished, following a generous donation from Barnsley Arts and Museum Service of a Hepplewhite-style wardrobe (c.1790) and two Hepplewhite chairs (c.1780), along with the purchase of a mahogany chest of drawers and a unique shaving stand (c.1790), which is also based on a Hepplewhite design.

### Fundraising

Last year ended on a high for the fundraising team, as in December we took part in The Big Give's Christmas Challenge. Thanks to the generous donations of BPT Members, other individual donors and supporters, we successfully reached our target of £20,000 towards The Whole Story Project!

To date we have raised over £4million (including the support from the Brownsword Charitable Foundation and Heritage Lottery Fund) which is a considerable achievement and we

are also tremendously grateful for the personal gifts we have received so far this year. However, we still need to raise £830,000 to achieve our vision. To discuss how you can play a part in this exciting initiative, please contact Head of Fundraising, Claire Owen, at [cowen@bptrust.org.uk](mailto:cowen@bptrust.org.uk). You can also help by spreading the word about the Project and encouraging your friends to support us too. To find out more about *The Whole Story* Project and the latest news visit [www.bath-preservation-trust.org.uk](http://www.bath-preservation-trust.org.uk).

### Education and the Whole Story Project

Polly Andrews, BPT's Education Officer, has been very busy this spring running some great workshops for schools and No.1 visitors during February half-term:

- **The Link School** visited No.1's kitchen in January to find out more about 18th-Century cooking. The students also took part in two workshops at their school, learning about the ritual of afternoon tea through object handling, and baking and eating their own seed cake using an 18th-Century recipe.



- Younger visitors to No.1 had the opportunity to make their own Georgian bonnets and silhouettes.

- **Twerton Infants School** brought 50 students to the Building of Bath Collection to explore maps and mapping, in collaboration with the organisation 5x5x5=creativity.

They continued on their learning journey in March when they visited No.1 with an artist specialising in storytelling.

- **St Andrew's Primary School** students have been acting as heritage consultants for the future museum, sharing their ideas for provisions for different groups, such as tourists and families. Students will also be taking over as Guides at No.1 to tell their peers about the house!

Tom Boden, BPT's Head of Education, is working with **City of Bath College's** stonemasonry students on their project to design stone benches for the re-developed area at No.1. Lisa White, former BPT Trustee and Art Historian, gave a talk to 40 students about garden furniture with a focus on stone benches, and the students then made a site visit to the museum.



Tom is also helping four **Bath Spa University** final-year History and Heritage students to develop a portable exhibition about *the Whole Story* Project, aimed at local residents and families. The exhibition will be launched on 1st June outside the Building of Bath Collection, to coincide with Bath International Music Festival's 'Party in the City'.



## BPT CAMPAIGNING - DEVELOPMENTS

Joanna Robinson - Conservation Officer

The future of the derelict **Bath Press site** remains uncertain as supermarket chain Tesco have withdrawn their planning application and appeal. The Local Planning Authority had recommended the application for refusal. The Trust supported the principle of re-developing this locally distinctive 'brown field' site for a mix of retail, housing and office use, though objected to the absence of detail from the application and to the form and design of several of the new build elements.

The Trust has welcomed early sight of the proposal for modernising and remodelling parts of **Bath Abbey** and **Kingston Buildings**. The Abbey has expressed a need for an even and stable floor, flexible seating, improved acoustics, heating and lighting, improved entrances, exhibition space, choir rooms, and facilities including storage, office space and meeting rooms. The Trust is broadly supportive in principle of the Abbey's desire to reorder the space and will monitor proposals closely as they develop.

Crest Nicolson have appointed architects to design homes for Phase II **Western Riverside**. The Trust is supportive of the development of the site for housing and welcomes a contemporary approach to the design of town houses and apartments. Phase 1a is nearing completion and members of the Architecture and Planning Committee visited the site in the autumn.

Over the past few months the Trust has taken part in a number of workshops for the redevelopment of Sainsbury's at **Green Park**, and the Homebase site. Sainsbury's proposes a master plan for the site which is to include housing, creative workspaces, a remodelled pedestrian bridge, and a new 60,000 sq ft. food store which would be the largest in the UK and feature a green roof to help soften its appearance. Considering the size of the store and its location within the City Centre, we have called for a robust view analysis to be undertaken to demonstrate the impact the store will have upon the local and wider views. BPT is not opposed to a contemporary or creative design approach to new residential and office buildings in this location though we have urged the architects to respect the setting of Green Park Station by pulling development away from the building. We will continue to maintain a constructive dialogue with the design team.

Over at **Woolley Valley** the Judicial Review regarding enforcement action against unauthorised development in the picturesque valley has been postponed and is now likely to take place in the spring. The planning authority is negotiating a planning application for a residual waste treatment facility at the **Fullers Earth** site. The Trust remains highly critical of the Council's decision not to take enforcement action against unauthorised works.



Near complete town houses in Stothert Avenue, Western Riverside

## BPT CAMPAIGNING - PUBLIC REALM

Work to improve **Northumberland Place** is due to commence in early May and **High Street** in the summer. The full range of larger and smaller on-street wayfinding 'monoliths' are due to be installed in the city centre by June. A new range of bespoke furniture is due to be installed at High Street, and street trading units are currently on trial at SouthGate. New drinking water refill stations (called Water Holes), will be the subject of a planning application shortly.

Consultants are currently being appointed by B&NES Council to develop a **Bath Pattern Book**. Outstanding landscape, lighting and public art plans are still required. BPT will be actively involved in these studies which are due to commence in May and run to the end of the year.

The Trust has supported proposals to commemorate the Diamond Jubilee with enhanced access to **Queen Square**. The project will see the historic pattern of the square restored, gates reinstated and access improved.

### Core Strategy - Examination in Public

The B&NES Core Strategy, which will set the planning framework for the next 15 years, has just been scrutinised through an 'Examination in Public' in which the Trust participated. The Inspector makes it very plain that the fundamental issue is whether the planned growth levels (housing and jobs) are consistent with Government policy and capable of being delivered. The Inspector seemed to be open to the argument that Bath is unique and requires special protection, and took trouble to understand the impact of development on the Outstanding Universal Values. The Trust achieved a number of useful outcomes in this context:

- A clear commitment from B&NES that development of the SPD (Supplementary Planning Document) based on the World Heritage Setting Study is a priority;
- A commitment from B&NES that the Building Heights Strategy will be an SPD (this is not clear in the current text);
- Interest from the Inspector in our representations on the inadequacy of the City of Bath Conservation Area Appraisal, and an indication from him that he would look at the soundness of the monitoring section of the Core Strategy, which at present gives B&NES no incentive to prioritise completion of this large and complex Appraisal;
- A request from the Inspector to B&NES to look at ways of bringing the Transport section into line with the amendments which English Heritage and B&NES have agreed to the Historic Environment section, which commits the Council to reducing the volume of traffic using historic streets and spaces through implementation of the Public Realm and Movement Strategy, and ensuring high quality design of transport infrastructure;
- A request from the Inspector to B&NES to tighten up the wording in relation to the Rec so as to clarify the sort of development which might be considered in that area (subject to the resolution of the legal issues, which are outwith the scope of the Inspector's examination);
- A higher profile on the need for cross-boundary co-operation with Wiltshire as well as the other local authorities in the



Finally work has started to complete the restoration of the penant paving at the Royal Crescent. The work is due for completion this spring.

West of England Partnership; and

- An indication that our suggestions for drafting on the green belt and on climate change should be taken into account.

The Inspector is likely to ask for representations on the way in which the new National Planning Policy Framework might affect the Core Strategy, and after that will review and make his decision as to whether the strategy is 'sound' and therefore becomes the basis of all local planning for the next decades. The Trust will be ready to engage in the development of Placemaking Plans for major development sites including the MOD sites.

Full details of the Core Strategy and LDF process can be found on the B&NES website. Please refer to the Trust's website for our response to the new National Planning Policy Framework published in March.

The long awaited **Localism Act** embodies the government's aims to devolve power down to local councils and communities, has been viewed with cautious optimism. Under the Act Neighbourhood Planning introduces a new right for communities to draw up a neighbourhood plan through a local parish council or neighbourhood forum. Provided a neighbourhood development plan or order is in line with national planning policy, with the strategic vision for the wider area set by the local authority, and with other legal requirements, local people will be able to vote on it in a referendum. If the plan is approved by a majority of those who vote, then the local authority will bring it into force. In Bath (where there are no parishes) a representative forum and geographical neighbourhood would need to be established. The Trust would wish to have a place on any forum developing a plan for neighbourhoods within the World Heritage Site. B&NES Council are consulting on a draft neighbourhood planning guide. For more information visit [www.bathnes.gov.uk/neighbourhoodplanning](http://www.bathnes.gov.uk/neighbourhoodplanning)



## IS BATH FIT FOR THE FUTURE?

**WARMER BATH**, a guide to improving the energy efficiency of traditional homes in the historic City of Bath, beat off stiff competition to receive the **Royal Town Planning Institute's (RTPI) National Sustainable Communities Award**, sponsored by the Crown Estate. Caroline Kay attended the ceremony in February to collect the award. We have brought the guidance to the attention of ministers who have recently appointed a specialist team to assess the impact of incentives being brought forward under the 'Green Deal' on heritage buildings. The guidance has been so well received it has paved the way for the development of retrofitting supplementary planning guidance (SPD) as part of Bath and North East Somerset Council's Local Development Framework; the SPD is out for public consultation this spring.

*"We regard this project as an excellent example of innovation, originality and transferability, which makes a significant contribution to delivering sustainable communities. In suggesting that technical solutions can be deployed without damaging heritage, it has performed an admirable educative function."*

Leonora Rozee, RTPI judging panel

With funding from Design Council CABE (Commission for Architecture and the Built Environment) the Trust is building on principles established in **WARMER BATH** in the development of a neighbourhood energy efficiency design strategy for the **London Road & Snow Hill** area. Volunteers from the community have worked with the Trust to develop an appraisal of the neighbourhood which identifies features worthy of preservation and enhancement, and energy saving plans for their homes. The strategy will set out locally appropriate energy efficiency measures and visions to show how buildings might be improved under a scheme of work. For more information contact Joanna Robinson [architecture@bptrust.org.uk](mailto:architecture@bptrust.org.uk) or 01225 338727.



BPT Chief Executive, Caroline Kay, accepting the RTPI award at the RTPI awards ceremony on 23 February 2012

**The Bath Homes Fit for the Future** open homes event took place on the 17th-18th March. A whopping 621 people visited the 12 open homes, and 160 visited the hub at the Building of Bath Collection over the weekend. The event organised by B&NES in partnership with BPT and Transition Bath showcased heritage and modern homes which have been made more energy efficient, including the homes of BPT members. The visitor numbers and great feedback show clearly that there is a strong desire among Bath residents for warmer homes that are cheap to run. We have demonstrated how as a community we can share our skills and knowledge and inspire each other.

There will be a further opportunity to share knowledge and opinions about 'retrofitting' Bath homes at a symposium hosted jointly by BPT and B&NES Council. *Is Bath Fit For the Future?* will take place at the Building of Bath Collection on 26th April.



Building of Bath Collection lit by LED lighting

### Bath Leading Lights

Bath Preservation Trust was awarded a grant of £14,438.60 by the Department of Energy and Climate Change through the Local Energy Assessment Fund to promote greater understanding and usage of LED Lighting in order to cut carbon consumption. The grant paid for the retrofit of all display lighting in the Building of Bath Collection, showcasing LED lighting in a domestic setting, an exhibition of LED lighting as part of "Bath Homes Fit for the Future" (including a giveaway of 50 light bulbs) and the production of a free guidance document detailing the options and benefits of LED lighting. Copies of this document are available at the Building of Bath Collection and via our website.

LED bulbs deliver 80% savings in energy, cost and CO2 emissions. They can be installed into existing light fittings and give full light instantly, rather than taking time to warm up. Bath has a population of around 84,000 people. If each person replaced just one standard bulb with an LED version, then Bath would save around £700,000 per year. This represents the electricity consumption of around 1,600 average household's electricity use, or 2,800 tonnes of CO2, or driving around 9 million miles!

## BPT IS REBRANDING

The Whole Story is proving to be a transformational project for not just No.1 Royal Crescent, but for the Bath Preservation Trust as an organisation. It is therefore the ideal time for us to review our current branding, website and marketing strategy as vital components for the future success of both the museum and the Trust. To this end we are developing separate but linked identities for both Bath Preservation Trust and No.1 Royal Crescent, each with their own logo, website, and voice on the various social media platforms we use (such as Facebook, Twitter, Trip Advisor and Flickr). We will also be developing separate websites for each of the other museums run by the Trust – Building of Bath Collection, Beckford's Tower & Museum and the Herschel Museum of Astronomy.

The Trust and all its museums will be united by a common design approach to the rebrand and website design, along with a shared palette of colours for use on marketing material. We will also use this opportunity to review the structure and content of our websites so that navigation around the sites will be much improved.

This is a very exciting development for the Trust and we feel certain that our current and future audiences will approve of the changes. There is to be a grand unveiling of the new logos at the AGM on 27 June 2012. The rebranding and website development is part of the Whole Story Project supported by the Heritage Lottery Fund.

---

## NO.1 ROYAL CRESCENT

Victoria Barwell - Curator

No.1 Royal Crescent has seen a successful start to its 2012 events calendar. The programme began in January with the eagerly anticipated annual guides' lectures. This year the series entitled 'Bringing it Home' highlighted aspects of Georgian life at home, and offered talks ranging from the art of fashion and hairstyling to music as an accomplishment. The series gave the perfect opportunity to thank our guides and provided essential training.

As '*The Whole Story*' Project progresses into its development stage, events at No.1 have been essential in providing valuable visitor feedback. In addition they give us the opportunity to introduce the project to new visitors, and answer their questions.

Our spring programme got off to a great start as families arrived to enjoy our February Half Term events. During the week we ran two workshops inspiring children to become 18th Century designers. In our first workshop families were inspired by the work of Thomas Chippendale whilst they designed their own 18th Century chairs. Beautiful bonnets were made in our final workshop where visitors were invited to create a silhouette

of themselves wearing their designs. Throughout the week families discovered the childhood stories behind No.1's portraits of children, in our house trail 'Have you seen my Childhood?'.

This summer we look forward to welcoming you to our programme of events where we will be celebrating Monarchy in our Jubilee exhibition, 'River Procession'. We will also be discovering the characters of Bunbury's minuet with a talk from Charles Miller, the chairman of the Covent Garden Minuet Company, and introducing our new Family Fridays workshops in time for the summer holidays.

## NO.1 SHOP

Georgie Swindells - Shop Manager

The shop at No. 1 is once again filled with ideal small presents to give to your hostess when on a weekend away or out to lunch; the award winning jams and chutneys all labelled with the No.1 logo are back, as are the delicious lemon curd and lemon curd biscuits. Topically we have small souvenirs to celebrate the Queen's Diamond Jubilee.

For those preferring a more personal gift the new range of summer scarves is just in, including wonderful soft linens and bright striking silks. Later in the season we will have a selection of No.1 umbrellas plus parasols for those who prefer the shade.

Unusual cards remain a staple of the shop stock from the beautiful and unusual to the humorous, and all gifts can be wrapped in the wonderful Eighteenth Century inspired papers of Frederica Cards.



Designing a Georgian Chair Workshop



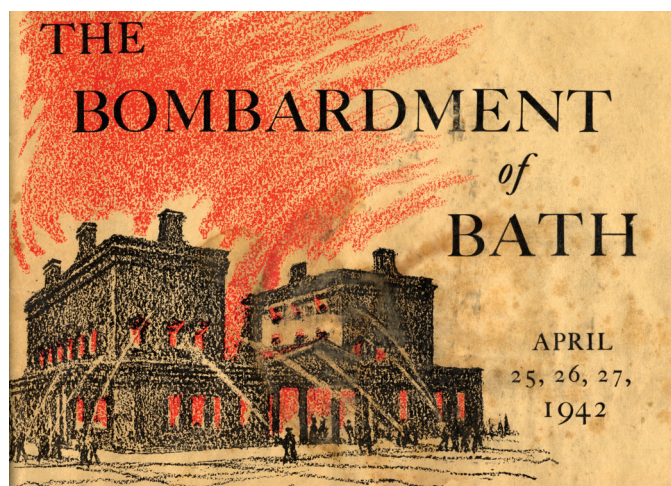
## BUILDING OF BATH COLLECTION

Tom Boden - Head of Education and Audience Development

Amy Frost - Collections Manager

2012 is shaping up to be another busy year for the Building of Bath Collection. We began the year with a major retrofit of all display lighting using new LED technology, funded through the Bath Leading Lights project described on page 5. This represents a significant external investment in the museum that will deliver both long term savings in electricity bills as well as reducing our overall carbon consumption. The museum will be hosting two major exhibitions this year – **Repairing War Torn Bath** until 23rd July and **Bust! How the Builders of Georgian Bath went Bankrupt** (4 August – 26 November 2012).

Several museums across Bath and North East Somerset are participating in events to commemorate the **70th Anniversary of the bombing of Bath in April 1942**, and at the Building of Bath Collection our exhibition **Repairing War Torn Bath** builds on work undertaken for a previous exhibition in 2005. The three day raid on Bath across the nights of 25, 26 and 27 of April in 1942 destroyed or damaged over 1900 buildings, changing the face of Bath's built environment forever. The exhibition features paintings and photographs that provide us with visual records of the bomb damaged buildings and dramatic images of the impact the Bath Blitz had upon the architecture of the city. With thanks to loans from the Bath Record Office, also featured are archives from the office of the Bath City Engineer who was responsible for the emergency repair or 'First Aid' of buildings, as well as the Bath Air Raid Damage Map for the city centre, detailing the various levels of damage as it was recorded for each individual building. These fascinating records show not only the emergency repair work which took place immediately after the bombing, but also the long-term impact that the Bath Blitz had upon the city, from continuing repair work after the



war, through the formation of the 1945 Plan for Bath drawn up by Patrick Abercrombie, to the eventual demolition of buildings beyond repair to be replaced with stark architecture of post-war Britain.

A study day led by Dr Amy Frost at the Building of Bath Collection will look in detail at these records, and illustrate the work undertaken by architects and builders who were on 24 hour emergency call out, ready to help save the buildings of Bath.

**Repairing War Torn Bath Study Day - 27 April - 10.30 - 16.00**

Tickets £30 (inc. lunch) Students £20 (inc. lunch).

Book on 01225 333895 or email [jhunter@bptrust.org.uk](mailto:jhunter@bptrust.org.uk)

## ARCHIVE UPDATE

Jo Johnston - Archivist

The Archive section of the Collections Access Project, part of *The Whole Story* Project, is progressing steadily with the help of six regular volunteer archive assistants who are busily sorting, re-packaging and cataloguing files of the Architectural and Planning Committee, the Interiors Committee and the Photographic Collection.

The archives document the work of the Trust since it was established in 1934 and include records of the extensive monitoring, campaigning and recording work of its committees. Whether a researcher is interested in the architecture of a particular building or past plans for the re-development of the City and its infrastructure, there will be something of interest in the archives. The Archive Room is open for research on Mondays, Wednesdays and Thursdays, from 10.00am to 4.30pm, by appointment with the Archivist: please email [archives@bptrust.org.uk](mailto:archives@bptrust.org.uk) or telephone 01225 333895 to make an appointment.



Volunteers hard at work in the Archive Room

## BECKFORD'S TOWER

Dr Amy Frost - Curator

It would be a mistake to think that Beckford's Tower and Museum goes to sleep during its long winter closure period. The winter months are in fact some of our busiest as we prepare for the new season and undertake essential repairs to the building. This year Steve McMillan, one of the Tower's team of dedicated volunteers, spent large amounts of time creating an inventory of two tin trunks that were passed on from Leslie and Elizabeth Hilliard (pictured below), the founders of the Beckford Tower



Trust and the individuals responsible for ensuring the Tower's safekeeping in the 1970s. The trunks have revealed a wealth of archive material not only about the early years of the Tower being opened as a museum but also about the modern history of the building and the history of the Tower Trust as an Organisation.

Items from these archives feature in the opening exhibition at the Tower this year **Saving Beckford's Tower**, which illustrates the determination of the Hilliards to restore the Tower, and commemorates the 40th anniversary of them purchasing the Tower building, runs until 1st July 2012.

Another highlight exhibit at the Tower this spring will be a rare 1815 copy of Beckford's gothic novel *Vathek*, made extra special as it is inscribed by Beckford to his half-sister, the 'sentimental' novelist Elizabeth Hervey. Alongside other Minerva Press novelists, Hervey's books provided Beckford with inspiration and material for his own works, *Modern Novel Writing* and *Azemias*, in which he satirises the sentimental novel. While we have copies of books from Beckford's own library in the collection, this is the first time we have had a copy that has actually passed through his hands.



The book is on loan to the Tower from a private collector and the relationship between Beckford and his half-sister will be the subject of a lecture at the Tower on 11 July at 6pm.

## THE HERSCHEL MUSEUM OF ASTRONOMY

Debbie James - Curator

### Constructing the Heavens

Tuesday 29th May - Sunday 16th December

This special exhibition at the Herschel Museum of Astronomy gives visitors the unique opportunity to see the night sky through the eyes of William Herschel, his sister Caroline and his son John. Using a 20 foot telescope the Herschels swept the night skies and created an astonishing General Catalogue that contained over 2,500 objects in the Northern hemisphere including galaxies over 250 light years away. This seminal work was the starting point for the great astronomers of the nineteenth century. The General Catalogue was subsequently updated by the Danish astronomer Johan Dreyer.

This exhibition has been curated by award winning local astronomer Andy Burns. "Using images taken through modern equipment it is frequently possible to create wonderful colourful images of the galaxies, nebula and clusters that abound in our night skies." Andy has interspersed these dramatic colour pictures with images in tones of grey that closely reflect the visual recordings made by the Herschels two hundred years ago using metal mirrors. The images are the work of Andy Burns at his home in Chippenham and at the Griffon Observatory in Spain. A Family Trail will be available with the exhibition.

Further details : 01225 446856

### Summer Solstice viewing session

Thursday 21st June between 10am and 4pm

On June 21st astronomers from the Wiltshire Astronomical Society, the Griffon Educational Observatory and the Bath Astronomers will be running a summer solstice solar viewing session in Kingsmead Parade, adjacent to Bath Abbey.

After a very successful collaboration between the Herschel Museum of Astronomy and the Roman Baths Museum in 2011 it has been decided to repeat an event which proved extremely popular with visitors to the city and local people who happened to be passing by on a day which saw a reasonable amount of sunshine. The powerful telescopes with solar filters feature the sun as a massive fiery ball dotted with solar flares, sun spots and other phenomena giving a spectacular show which can be viewed safely with the naked eye.



'Summer solstice sunspotters in Kingston Parade'



## UPCOMING EVENTS

### NO.1 ROYAL CRESCENT

#### River procession

#### A Celebration of Monarchy

Tuesday 22 May - Sunday 10 June

To celebrate the Diamond Jubilee No.1 Royal Crescent will focus on the early history of royal river processions. Inspired by the work of Canaletto we will be recreating the 18th Century art of sugar sculpture for our table display depicting a lavish public ceremony fit for a Queen. Discover the connections No. 1 has with royalty in our family trail.



### BUILDING OF BATH COLLECTION

#### Repairing War Torn Bath

Open Sats, Suns and Mons

10.30am – 5.00pm

Exhibition until 23 July



The Bombardment of Bath in April 1942 resulted in over 19,000 homes and buildings being damaged or destroyed. This exhibition looks at the emergency work undertaken to save and repair those buildings, and powerfully illustrates the impact of war on the architecture of Bath.

### BECKFORD'S TOWER

#### Saving Beckford's Tower

Exhibition until 1 July

Forty years ago in 1972 two brave Bath residents took on a challenge that even the National Trust turned down: they purchased a neglected building known as Beckford's Tower.

With passion, enthusiasm and a great deal of hard work, Leslie and Elizabeth Hilliard rescued Beckford's Tower and established it as the only museum in the world dedicated to the life and work of William Beckford.

Using items from the Hilliard's archive, the highs and lows of rescuing a 120 foot high tower at a time when historic buildings in Bath were being demolished every day are revealed.

## CITY EVENTS

### WORLD HERITAGE DAY 2012

Sunday 22 April  
11.00am and 3.00pm

No.1 Royal Crescent will be offering free admission to Discovery Card holders. Costumed interpreters will be bringing the house to life whilst outside there will be a Roman encampment in front of the Crescent and the opportunity to try stone carving.

### MUSEUMS AT NIGHT

Saturday 19th May

Join us as two of our museums participate in the international event Museums at Night. No.1 Royal Crescent will be open between 6pm and 8pm with live music performances from soprano Alicia Carroll and lute player Bill Bagley. The Building of Bath Collection will be holding a 1940s night between 7pm and 10pm with live music and the opportunity to see items from our archives relating to Bath Blitz. Both events are free to Discovery Card Holders.

### OLYMPIC TORCH RELAY

Tuesday 22 May

Bath hosts the Olympic Torch relay which will be carried along the Royal Crescent at around 4.15pm. No.1 is gearing up for fantastic celebrations and festivities, both inside and out. Although closed for the ceremony, the museum will be open as normal in the morning and the shop will be offering original souvenirs and keepsakes.

### PARTY IN THE CITY

Friday 1 June

Bath's Party in the City will include three different performances at the Countess of Huntingdon's Chapel.

6.30-7.10pm Harbour Winds quintet

7.20-8.00pm Jigfoot (English folk dance tunes)

8.10-8.50pm The Chandos Singers chamber choir

FREE to attend.

## WORLD HERITAGE ENHANCEMENT FUND (WHSEF)

**David Beeton - Chairman**

**Ainslie Ensom - Fund Administrator**

This Fund is supported and administered by BPT and is now working on over 25 enhancement projects. One is the restoration of **two statues** which stood on the balcony of the Corridor before the IRA bombing: it was assumed that they had been destroyed but our Chairman recently found them in a local antique shop! They were both in a bad way - one was in over a hundred pieces. The Masonry Dept of the City of Bath College kindly took on their restoration as a student project, and they are doing a magnificent job piecing them together. They will soon be reinstated in their original position.

You may have noticed another of the Fund's project programmes which is to conserve the 18th Century **incised street names** (pictured right)

We are also supporting a better future for **Beechen Cliff**. Beechen Cliff and the adjoining fields are the most iconic part of the city's skyline, but they are in a very poor state of maintenance. Two years ago the World Heritage Site Steering Group, on which BPT serves, invited the Council which owns the land, to explore whether a transfer to the National Trust as an extension of its substantial skyline holdings, might provide a better future. We are pleased that detailed negotiations are now taking place for a transfer of the maintenance to the National Trust, and the Council has provided £500,000 in its current year's budget as a contribution to the necessary endowment.



An example on Lansdown Hill of the dramatic improvements which are being achieved with restoring incised street names



## MEMBERS' WALKS PROGRAMME 2012

All walks last about an hour and a half and all start at 6.30pm. The walks, which are free to members, must be booked in advance as numbers are necessarily limited. The walks vary in their starting point, so please take careful note of these.

### LIFE IN VICTORIAN BATH

**LED BY ALAN WILLIAMS (MAYOR'S GUIDE)**

Thursday 14th and Wednesday 20th June - 6.30pm

*Meet on the pavement opposite to Victoria Art Gallery*

Bath is probably as much Victorian as it is Georgian, but it is not a side of the city that most visitors or even residents are aware of. This walk will follow a route charting the highs and lows of the city during the Victorian period. The sudden impact of industry to the degradation and slums. The architecture of Brunel, Gilbert Scott and Major Davies combine with the background to charities, Garibaldi's bridge and a terrible tragedy.

### WHAT A CARVE UP!

**LED BY DR AMY FROST (CURATOR OF BECKFORD'S TOWER)**

Thursday 16th August and Wednesday 22nd August - 6.30pm

*Meet at the Obelisk in Queen Square*

Enhancing, appropriate or unnecessary, the carved stone facades in Bath reveal a great deal about the styles of architecture that exist in the city, and the ideas that lay behind them. Opinions will vary on these and the walk will give members an opportunity to observe and learn but also a chance to voice their various opinions on the contrasts in decoration that exist.

### FEISTY FEMALES

**LED BY AUDREY WOODS (MAYOR'S GUIDE)**

Thursday 12th July and Wednesday 18th July - 6.30pm

*Meet at Laura Place - finish at Duke Street*

The title is in reference to some of the women who have engaged in a more varied life than that of just embroidery and household management. Upon investigation, there were many women who made their mark in society, some naughty, some philanthropically. The ladies who were in Bath between 1700 and 1990 have certainly made their mark and we can see where some of them lived, reflect on what they did and also view some pictures of them.

### RIVER, CANAL AND GARDEN

**LED BY TERRY MITCHELL (MAYOR'S GUIDE AND MAYOR'S OFFICER)**

Wednesday 5th September and Thursday 13th September - 6.30pm

*Meet at Pavement opposite Victoria Art Gallery*

Amble along the river, canal and through two parks, looking at their history but also the beautiful views and their setting within the city. The walk will take about 1.5 to 2 hours to complete. It will highlight the two waterways of the River Avon and the Kennet and Avon Canal, and include Sydney Gardens and Henrietta Park.



## WELCOME TO OUR 2012 TOURS PROGRAMME

**Peta Hall: Membership Secretary and Trust Tours Co-ordinator**

Thank you to everyone who has already booked for these Tours via the Priority Booking arrangement. I am happy to say that as a result, all our proposed tours look as though they will be well supported and can therefore go ahead. Buckland, as you can see, is fully booked prior to this Newsletter, and I am sorry to have to disappoint a few of you on this one. I do anticipate the other three tours filling up quickly, so please return the booking form and payment by cheque to me as soon as possible, to save being disappointed. I am asking for a separate cheque for the Aynhoe visit, as I think that will be the next tour to become full.

### Buckland House, Faringdon Oxon

**Date:** Thursday 10th May 2012: **Part Day**

It is a huge privilege to have been granted permission for a private visit to Buckland House, described by Nicholas Pevsner as "the most splendid Georgian house in the Country", and having a real link to Bath via John Wood. Standing in a 150 acre deer park, this Grade II listed building was built in 1755-58 by John Wood the Younger, for Sir Robert Throckmorton of Coughton Court. Overall, Buckland is a remarkable original 18th Century building, combining Palladian, Baroque, Rococo and neo-Classical elements. Although designed as a villa for summer occupation near the main Bath-London road, in its abundance of fine craftsmanship and decoration, and spacious interiors, it has the quality of a small palace. Acquired in 2004 by Patrick "Paddy" McNally (known from Formula One), he undertook an extensive restoration programme which was completed in 2009. The house includes marble fireplaces, exquisite mouldings, cornicing and painted ceilings, Corinthian pilasters and carved festoons. It is renowned that one of the 15 bedrooms was designed as a copy of Marie Antoinette's bedroom from Versailles. There may also be the ghost of a white lady to look out for!

### Aynhoe Park, Banbury, Oxfordshire (with a stop in Burford)

**Date:** Thursday 21st June 2012 **Full day**

**Cost:** £40 - to include coach, private guided tour and sandwich lunch at Aynhoe

**Refreshments:** Included - light lunch of sandwiches, cakes, coffee/tea at Aynhoe

As reported in Country Life magazine, Grade I Listed Aynhoe Park is a house of drama. Built in the 17th Century, it was gloriously redesigned by Thomas Archer in 1707-11 and by Sir John Soane in 1799-1804, but its later history has been marked by dramatic turns. After the owner, Richard Cartwright and his son died in a car crash in 1954, a crippling Inheritance Tax bill forced the family to sell the property to the Country Houses Association, who split it into flats, until the CHA collapsed in 2003. The property is now privately owned by James Perkins who, having made his fortune in the music industry, took on the mammoth task of turning Aynhoe back into a single house. He has filled the house with an eclectic mix of his treasures – a vast collection of plaster casts, taxidermy, modern photography (note - some erotic for the bashful among you!), alongside striking antique furniture. The result is theatrical, slightly eccentric, and with an underlying sense of humour, but the much-needed restoration of Aynhoe has been painstaking and is never pompous. We shall also have an opportunity to visit the Parish Church of St Michael's at Aynhoe, which has a connection with Bath. This visit will include a morning stop in Burford, so members can stretch their legs and/or have a cup of coffee. *Please send a separate cheque if booking this tour.*

### Broadlands and Mottisfont Abbey and Gardens, Romsey, Hants

**Date:** Tuesday 3rd July 2012 **Full day.**

**Cost:** £35 (NT members) or £43 non NT - to include coach and tour of Broadlands and entry to Mottisfont Abbey

**Refreshments:** Not included. Please bring either a picnic or buy some lunch at Mottisfont.

In the morning, the group will visit Mottisfont Abbey to see the Gothic remains of the original 13th Century Augustinian priory, the house, the National collection of old-fashioned roses, and the fine collection of 20th century art. Bring a picnic, or buy some lunch in the Kitchen café or the Kiosk for snacks. After lunch we will travel to nearby Broadlands. After over 3 years of closure, Broadlands - home of the Mountbatten family, and once the home of the Prime Minister, Viscount Palmerston, has reopened its doors. We will visit Broadlands in the afternoon for a guided tour of this fine example of mid-Georgian architecture, filled with art treasures in its superb interiors, and built on the banks of the River Test. Once owned by Romsey Abbey, the major architectural transformation which made Broadlands the elegant Palladian mansion it is today, began in 1767. Between 1767 and 1780, Lancelot 'Capability' Brown planned and supervised the landscaping and planting of the grounds to create what must be one of his greatest masterpieces.

## Hughenden Manor, High Wycombe, Bucks (with coffee in Henley)

**Date:** Thursday 6th September **Full day**

**Cost:** £35 (NT members) or £42 Non NT - to include coach, morning coffee and biscuits en route, and entry to Hughenden for non NT members if applicable.

**Refreshments:** Included - Morning coffee and biscuits in Henley-on-Thames. Lunch is not included - there is a limited capacity restaurant at Hughenden where you can buy lunch, but you might like to bring a picnic lunch and something to sit on, and use the picnic area instead.

Discover the country hideaway and colourful private life of the most unlikely Victorian Prime Minister Benjamin Disraeli who lived here from 1848 to 1881. Browse among an extraordinary collection of personal memorabilia and imagine dining with Disraeli's great admirer Queen Victoria in the atmospheric manor. Uncover the top secret Second World War story of Operation Hillside and experience Sergeant Hadfield's wartime living room. There is also a glimpse into the life of the servants below stairs. Outside, the formal garden has been recreated based on the original designs of Mary Anne Disraeli. Although not owned by the National Trust, Hughenden Parish Church and Disraeli's grave, situated just outside the estate, can be visited by anyone wishing to do so.

### Terms and Conditions.

**All Tours start from Avon Street Coach Park** and ticket prices include: coach travel, driver's tip, admission fees and guided tours where applicable. In order to keep ticket prices down, refreshments are not included unless specifically stated.

*Trust Tours telephone number: 01225 338727*

*The Bath Preservation Trust Limited*

*Registered Office: 1 Royal Crescent, Bath, BA1 2LR*

*Registered in England No: 294789 Reg. Charity No: 203048*

1. All bookings must be made in writing and will only be confirmed on receipt of the full fare.
2. Cancellations are not normally accepted; however, if there is a waiting list, your seat will be re-sold.

3. In the unlikely event of insufficient bookings for any tour, it may be withdrawn - in which case the full fare will be refunded.
4. Trust Tours reserves the right to change itineraries or venues due to unforeseen circumstances.
5. All reasonable steps are taken to ensure that independent suppliers of services (coach operators, restaurants and the owners of properties visited - who may limit their liabilities) maintain the highest possible standards regarding safety, security and hygiene. However, neither Trust Tours nor the Bath Preservation Trust can take responsibility for personal accident, loss or damage during any of these tours.
6. Both smoking and pets are prohibited on the coach.

If you have any queries please ring Peta Hall on 01225 338727.

## HAVE YOU CONSIDERED MAKING A LEGACY TO THE BATH PRESERVATION TRUST IN YOUR WILL?

When Bernard Cayzer gave No.1 Royal Crescent to the Trust, he gave us a marvellous asset which allowed us to develop a renowned museum. But he also gave us financial independence.

Legacy gifts to the Trust do not need to be as magnificent as No.1 to continue this valuable role. The Trust will be very grateful for any contribution that you are able to make through a legacy.

Bath's "World Heritage" status means that our campaigning work continues to be an essential part of Bath's development, and our education and interpretation work ensures that the widest possible audience understands our purpose "to encourage and support the conservation, evolution and enhancement of Bath and its environs within a framework appropriate both to its historic setting and its sustainable future, and to provide educational resources that focus on the architectural and historic importance of the city".

The Trust's influence and independent voice is needed as much in the twenty-first century as it was in the twentieth century. But our ability to fulfil this role is directly in proportion to our resources. Together with the support of our members, we need to add to those resources to continue to act for the benefit of the people of Bath.

If your estate is liable to Inheritance Tax, you could reduce the amount due by choosing to give money to charity. If you leave a gift to charity in your Will, its value will not be included when valuing your estate (your money, possessions and property) for Inheritance Tax purposes. Gifts made to a charity in the seven years before your death are exempt from Inheritance Tax.

If after reading this you decide to leave a legacy to us in your Will, please contact Caroline Kay, in confidence, on 01225 338727 or in writing at the Trust offices at No.1 Royal Crescent, Bath, BA1 2LR.