



BATH PRESERVATION TRUST

Issue number 79 | Spring 2014

Celebrating our 80th birthday!

ABBEY GREEN

ABBEY GREEN

THIS BUILDING HAS BEEN PURCHASED BY
THE BATH PRESERVATION TRUST
FOR RESTORATION & REHABILITATION

Inside this issue

- Core Strategy
- Campaigning updates on MOD sites, Grand Parade & Undercroft, Green Park and more
- Trust Tours and Summer Walks programmes
- No.1's performance post re-opening
- Award shortlist
- Marketing initiatives

Abbey Green before and after 1973 restoration

www.bath-preservation-trust.org.uk

Message from the Chairman

What a difference a year makes!

Last March, icy blasts were blowing across England, No. 1 Royal Crescent was closed and under wraps, and we wondered whether spring would ever come. This year the daffodils are out early, the sun is shining and the visitors to Bath, judging by the ratings of TripAdvisor, are very much enjoying the museum again.

We are aware that members have joined the Trust for many reasons but mainly it is a manifestation of their love for the city. It is undoubtedly the case that Bath is going to see substantial changes over the next few years; the calls on the Trust to be involved, to be consulted, to participate or indeed where required to protest, grow daily. We need our membership to keep in touch, to let us know what they think, and to help us develop our ideas while recognising that it would be surprising if 1400 members had identical views. The balance we often have to strike is in recognising that change is inevitable in this city while wanting to ensure that the things we all love are protected and nurtured. As Simon Thurley, Chief Executive of English Heritage recently put it: 'Heritage is about the future, really. It's not about the past. People think people in heritage want to stop things happening. What we actually want is to make sure that the very best parts of our nation's past become parts of our future'.

The Trust celebrates its 80th birthday this year. The founding members are mostly gone, and even the campaigners of the Trust's middle age are now getting on a bit. We must make sure that the Trust keeps refreshing itself for future generations as it has done in the past.

Finally I must thank Giles Mercer, who has stepped down as a Trustee, for all the support he has given the Trust especially through the project. At the AGM the trustees hope to bring forward some new names as trustees; as ever, if anyone would like to talk to me about joining our committees and contributing to our work please let me know.

Edward Bayntun-Coward

Message from the Chief Executive

At time of writing we are in the last stages of preparation for the final Examination in public for Bath's Core Strategy, this time looking at the final determination of how many houses the city should be expected to accommodate over the next 15 years, in what locations, and whether or not there should be an encroachment into the green belt.

The Trust has consistently taken the position that Bath's green belt should stay intact in order to preserve the characteristics of a closely knit urban centre surrounded by a green rural setting. In taking such a position we are not saying there should be no more houses in Bath: indeed, the plans include the completion of the Bath Riverside site and the redevelopment, largely for housing, of the three vacated MOD sites. The Trust is not therefore anti-development but rather, pro green belt and Area of Outstanding Natural Beauty, and pro the green setting of the World Heritage Site, for the enjoyment of all the people who live in Bath including the several thousand who will occupy the newly developed sites.

At the time of our 80th birthday it is useful to remember that part of our charitable objects focus specifically on the protection and enjoyment of the green countryside around Bath. Indeed, later this year a bid is to be put in with several partners, including BPT, to the Heritage Lottery Landscape Partnerships Fund specifically to encourage the safeguarding and increased enjoyment of that landscape, which should be accessible and available for all. If the partnership is successful in this bid there should be a variety of projects coming forward which offer the opportunity for volunteer involvement and we hope this will offer a new way for our members to become involved.

This is not to say that the job is over where buildings are concerned! We hope that this newsletter will show that the Trust's vigilance continues to show benefit to the city's protected buildings, and that that role will continue for a long time to come.

Caroline Kay

Bath Preservation Trust Campaigning

Core Strategy

The latest hearings for the Examination in Public of the Core Strategy are currently underway, with particular emphasis on the green belt sites. The Trust has consistently opposed development on the green belt sites immediately around Bath, as the Green Belt forms an important part of the protection of the setting of the World Heritage Site. For those who fear that the Trust somehow stands in the way of housing development, it should be pointed out that the Core Strategy involves the provision of around 7000 new dwellings in Bath, only 450 of which are proposed on the green belt sites. So our argument is that a disproportionate amount of harm will be caused for a marginal 'gain'.

MOD Sites

Foxhill: Clearance of the old MOD buildings has begun and the developers, Curo, have been involving the local community in bringing forward a masterplan for the site. During February and March of this year members of the Residents Regeneration Panel and Stakeholder Forum have been meeting with HTA Architects and representatives of Curo to discuss initial ideas for the regeneration of the former MOD site and the existing Foxhill estate. Bath Preservation Trust has attended meetings and workshops and has provided feedback on the initial plans. In April a public exhibition is being held in Foxhill to introduce the masterplan. For more details visit: www.foxhillregeneration.co.uk.

Warminster Road: Plans have been revealed for 207 new homes on the 17-acre site. Development is being brought forward by a consortium made up of Square Bay (Bath), Firmstone Development and Edward Ware Homes. The 207 homes will be made up of 49 one or two-bedroom apartments and 158 houses that will range from two-bedroom to five-bedroom properties.

The site will also create 402 parking spaces for residents made up of garages, private driveways, communal parking places and visitor spaces.

Fullers' Earth

In March the owners of the former earthworks submitted an application for a residual waste facility and a materials recovery facility. The applicant seeks to retain multiple uses on the site while building a large new facility on land where the planning status is being contested by the enforcement proceedings. Bath Preservation Trust has objected to the extension of industrial use on the site, especially in advance of the clarification of the planning status across the site. The lawful use of the site will eventually be determined by evidence submitted to the Planning Inspector when he reconvenes the Public Inquiry.

The Trust's objection drew on The Joint Waste Core Strategy which allocates the site only for residual waste treatment and specifically refers to the fact that permission will not be granted for waste proposals which harm Areas of Outstanding Natural Beauty or the World Heritage Site and its setting. The Trust argued that a minimalist new facility constructed on the old industrial site would be more sensitive to the AONB and WHS and that structures associated with the site's other uses should be removed.

Bath Quays Waterside and Enterprise Area Masterplan

The Trust has been attending stakeholder consultation events over the past six months designed to develop the Bath Quays Waterside project and the emerging Bath Enterprise Area Masterplan. The Quays project includes essential flood mitigation works, and also looks to shape the riverside stretching between Churchill Bridge and Midland Bridge. Discussions have centred upon the form of the landscaping along the riverside and the balance between usable public space and the works necessary for the flood mitigation. This project is also acting as a first step in the emerging Bath Enterprise Area Masterplan, which covers 98 hectares including the Avon Street/Milk Street area and is currently being developed by Feilden Clegg Bradley Studios. The Trust will continue to be involved in stakeholder consultation as this project further develops.

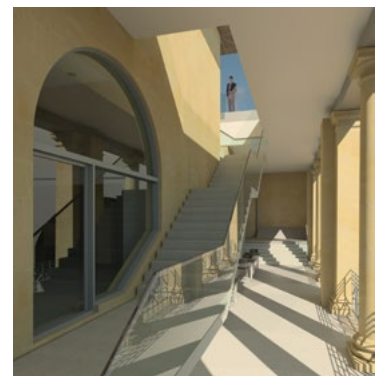
Grand Parade & Undercroft

Details of a project by B&NES to regenerate the Grand Parade & Undercroft were recently announced. Forming part of the current setting of Robert Adam's Pulteney Bridge and passing from the Bridge around the Empire and the Parade Gardens Park some 370 metres of stone colonnades carry the elevated public roadway. The Council's brief looks to bring all this undercroft area overlooking the river into active commercial use, principally for restaurants, as well as improving the public realm in this part of the city.

Another aim is to open up two historic pedestrian ways between the river and the city's streets that pre-date the bridge, but once gave access to pedestrian ferries across the river. Boat Stall Lane passes through the old Eastgate of the city: one of the city's last remaining medieval wall gateways to have survived the expansion of Bath in the 18th century. The second route, Slippery Lane, winds steep and narrow alongside the old city wall; both have been inaccessible to the public for many years.

The project also seeks to bring the Parade Gardens Park into full use as part of the access plan, and is the first phase of long term ambitions by the Council to bring enhanced commercial, social and cultural life to the Guildhall area by enlarging the size and importance of its markets, bringing new uses to office spaces being relocated elsewhere and enlarging the public realm into areas previously used for car parking.

The Trust will be assessing the details of the proposals following a meeting with the architect Edward Nash in April and will comment in response to the planning application which is expected to be submitted this spring.



Colonnade visual courtesy of Nash Partnership

Bath Preservation Trust Campaigning

Gibbs Mews

The Council has successfully challenged the use of reconstituted stone cladding on this residential development since the material did not comply with the relevant Condition of the planning permission. The Trust participated in the planning appeal hearing. The owner is now required to remove this cladding and to replace it with natural Bath stone. The method statement submitted to the council specifies that the existing blocks are to be removed by hand, commencing at roof level and proceeding “in an orderly manner” down to ground floor level. A sample panel of Bath stone has been constructed on the site and the Council is ensuring that the quality of the material and workmanship now meets the requirement of the condition.

Green Park student accommodation proposals

A planning application for student housing on the site of Green Park House and Ernest Ireland House opposite Green Park Station has been submitted to the council for determination. Prior to Berkeley Homes' involvement with the site, planning permission had been granted for a 190 bed hotel and office with basement parking. The new proposals by Berkeley retain the classical approach and scale of development established under the approved hotel scheme but now the design proposes a row of town houses to the frontage onto Green Park Road in the attempt to enliven the street frontage. The Trust has been involved in discussions with the developer since the pre-application stage of the project and has helped to inform a considered and more appropriate design. The application is now being considered by the planning department.



The proposed view of the accommodation from Midland Bridge Road (Courtesy of Berkeley Homes)



The proposed view of the accommodation from Green Park (Courtesy of Berkeley Homes)

Bath Green Homes 2014

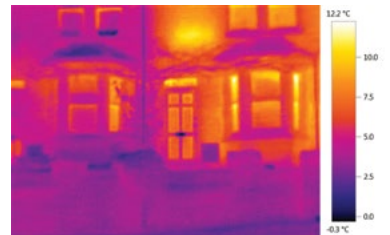
We will continue our partnership in this successful community project in 2014, this year taking place in the autumn.

Transition Bath's successful bid to the Ready for Retrofit programme is a huge boost and will permit a complimentary green living fair event to take place. Further sponsorship will help secure a full range of complimentary events and activities including a popular programme of workshops hosted by BPT.

Once again we are calling to our membership to visit these inspiring eco-homes and participate in the event. We are particularly keen to showcase more traditional homes and listed buildings which have been made greener, more comfortable and fit for the 21st century. If you would like to tell us about any changes you have made to your home and would be interested in opening to the public on 27th and 28th September please contact Joanna Robinson on conservation@bptrust.org.uk or 01225 338727.

If you would like to support the project there are a range of options to suit all budgets and we will also need volunteers to help steward the open homes.

For details please contact Cathy on cathy@bathgreenhomes.co.uk and for more information about the event visit the Bath Green Homes website: www.bathgreenhomes.co.uk.



This thermal imaging photo shows just how much heat is lost through the Bath stone wall. The bright spots shows the position of a radiator – a simple radiator reflector would help transfer this wasted heat back into the room.

The Recreation Ground

In February the Architecture & Planning Committee received a presentation and viewed the latest iterations of the stadium design plans. Questions were asked of architect Jim Eyre from Wilkinson Eyre.

The amended design is now more detailed and shows the points of the arches tapering into Bath stone-clad pillars thereby creating a modern take on a colonnade. The height of the stand is determined both by capacity and the maximum ‘rake’ (steepness of the seating). The East stand will be slightly higher than the West due to larger capacity and also its demountable structure. The height of the West stand has been reduced by about a metre in response to our concerns and seems to retain sightlines to the green hills around the Rec, though we will need to study this very carefully. We have yet to see fully verified views or a detailed historic impact assessment: these are likely only to be available when plans are submitted.

We have no objection to a contemporary design approach but need assurance that the design has responded to the specific qualities of Bath's landscape setting and appropriate for the centre of the World Heritage Site.

There is considerable information in the planning application to be studied and the Trust's final position will be announced to the public after this. We would be particularly interested to hear the views of our members after the final designs have been published. It is anticipated that the planning application will go to the June Development Control Committee meeting for determination.

"I wanted to share with you Tom Boden's report on No.1's performance in 2013 and reiterate his thanks to all volunteers and museum staff who have achieved these excellent results. They really are terrific! I'm sure our members will agree."

Peter Hall

Facts and figures for the 2013 season at No. 1 (21 June - 15 December)

- For the six months we were open, we received 40,000 visitors compared to an average of 50,000 before the project for a ten month season
- Our visitor research showed that 73% of our visitors rated their time as 'Very Enjoyable', compared with c. 58% in previous years. In the same survey the Roman Baths scored 65%, the Holburne Museum 66% and the Jane Austen Centre 43%
- 98% of our visitors said that the staff and volunteers at the museum 'were warm, friendly and helpful'
- 59% of our visitors spent over an hour visiting No. 1 - this compares with 16.7% in 2012

- Of 167 TripAdvisor comments received between 21st June 2013 and 28 Jan 2014, 89% were given a four or five star rating (53% five star). We are currently ranked 9 out of 87 attractions in Bath - ahead of all other museums except the Roman Baths.

Very positive comments about volunteers including:

- The volunteers who are there for questions have so much insight and knowledge, they add greatly to the overall experience
- What made it so enjoyable was there was a member of staff in most rooms who encourage you to ask questions and give very interesting answers
- The volunteers were warm, friendly and very knowledgeable - giving us little bits of knowledge that people may not have known
- Initially went for a quick look, but got sucked in by the sheer beauty of this place and the gushing enthusiasm of the people there who obviously love their history. All were happy to chat as long as you needed and as a result we lost a whole afternoon spent admiring the house and all of its period features.

Trust tours 2014 – booking information

I am delighted to introduce this summer's Trust Tours programme to those of you who have not already booked under our Priority Booking Scheme. We have had an overwhelming response already, so please follow the booking instructions at the end of this piece before applying and paying. St Giles is fully booked but there are places on the other three days, which I am sure will be snapped up fast! Thank you all for your support for these outings.

Peta Hall, Membership Secretary



Badminton House, Gloucestershire

Tuesday 20 May. Departing Bath 1.00 pm.

Returning approx. 6.00 pm.

By kind permission of the Duke and Duchess of Beaufort, we shall be making a private visit to this spectacular estate, deep in the heart of the Gloucestershire countryside. The House dates from the 17th Century and is set in a beautiful deer park, which hosts the world famous Badminton Horse Trials each May. The game of Badminton was invented in the house in 1863. This visit will include a tour of the available parts of the house, Badminton Church, and the private gardens. After tea at the House, we hope to be able to see Worcester Lodge, where Trust member Hilary Peters is a tenant and has kindly offered to show us her home.

Refreshments: Tea and biscuits at Badminton House.

Cost: £40 per head, to include coach travel, private tour and tea.

St Giles House, Dorset – a private house and major restoration project

Tuesday 17 June. Departing Bath 8.30 am.

Returning late afternoon

Another private visit, generously agreed by Nick Ashley-Cooper, 12th Earl of Shaftesbury, who after the death of his father and sudden death of his brother, inherited the title of 12th Earl and turned his attentions from working as a DJ in New York to restoring the family estate. The 17th Century, 500 acre estate had fallen into ruin after years of neglect and Nick, living with his wife and two young children, bought the property and converted wing, aims to have the house and its reputation restored by spring this year. Nick will show members the property and explain the works that have been carried out to bring the house back to life. There will also be an opportunity to visit the beautiful little church at the gates.

Refreshments: The group will have a sandwich lunch at the property.

Cost: £45 per head to include coach travel, tour and sandwich lunch.

Sorry –
FULLY BOOKED

Members' Page: Trust tours 2014 – booking information

Rousham House and Park – a private house, near Woodstock

Tuesday 8 July. Departing Bath 9.00 am.

Returning approx. 6.30 pm.

An opportunity to visit this privately owned house and garden, by kind permission of the Cottrell-Dormer family. Built in 1635 for Sir Robert Dormer, William Kent began remodelling the house in 1738, resulting in a building resembling an early Tudor palace in free Gothic style. This outing will start with a visit to Woodstock, where members can explore at leisure. There will be a sandwich lunch at the Duke of Marlborough inn, outside Woodstock, on the way to Rousham for our tour. As well as a tour of the house, there will be time to look at the gardens, which were also remodelled by Kent in 1738. On the way back to Bath we shall return to the Duke of Marlborough for tea and biscuits, as there are no facilities at Rousham.

Refreshments: Sandwich lunch and tea and biscuits at the Duke of Marlborough.

Cost: £46 per head, to include coach travel, private tour, sandwich lunch and tea.



Nuffield Place interior

Nuffield Place and Grey's Court, near Henley-on-Thames

Thursday 11 September. Departing Bath 9.00 am.

Returning approx. 6.30 pm.

We shall visit Nuffield Place in the morning; the time-capsule home of the philanthropist William Morris, Lord Nuffield, founder of Morris Motor Cars and one of the richest men in the world. See the house as Lord and Lady Nuffield left it, making it a perfect example of a 1930s country home. Members can buy coffee or tea in the tea room here. We shall then move on to Grey's Court, where members can buy lunch in their new tea room, or picnic on the lawns or at tables, depending on the weather. Grey's Court is a picturesque 16th Century mansion with tranquil gardens, home to the Brunner family until recent years. The series of walled gardens are set amidst medieval ruins, and other buildings include the 12th Century Great Tower and a rare Tudor donkey wheel. After this visit we shall return directly to Bath.

Refreshments: Not included. Please bring a picnic, or buy lunch at Grey's Court.

Cost: £34 for National Trust members. £50 for non-NT members, to include all entry fees.

To Apply

Please telephone Peta Hall on 01225 338727 (Tuesdays and Thursdays) or email petahall@bptrust.org.uk to check availability before completing the booking form. Once you have established that there is space available, please complete the booking form and return it by post, with a cheque (payable to Bath Preservation Trust) to: Membership Secretary, Bath Preservation Trust, 1 Royal Crescent, Bath BA1 2LR. Regrettably, we cannot accept credit card payments. Thank you.

TERMS AND CONDITIONS:

All Tours start from Avon Street Coach Park and ticket prices include: coach travel, driver's tip, admission fees and guided tours where applicable. In order to keep ticket prices down, refreshments are not included unless specifically stated.

Trust Tours telephone number: 01225 338727

The Bath Preservation Trust Limited

Registered Office: 1 Royal Crescent, Bath, BA1 2LR

Registered in England No: 294789 Reg. Charity No:203048

1. All bookings must be made in writing and will only be confirmed on receipt of the full fare.
2. Cancellations are not normally accepted; however, if there is a waiting list, your seat will be re-sold.
3. In the unlikely event of insufficient bookings for any tour, it may be withdrawn - in which case the full fare will be refunded.
4. Trust Tours reserves the right to change itineraries or venues due to unforeseen circumstances.
5. All reasonable steps are taken to ensure that independent suppliers of services (coach operators, restaurants and the owners of properties visited - who may limit their liabilities) maintain the highest possible standards regarding safety, security and hygiene. However, neither Trust Tours nor the Bath Preservation Trust can take responsibility for personal accident, loss or damage during any of these tours.
6. Both smoking and pets are prohibited on the coach.

Members' Page: Summer walks programme 2014

Summer walks programme 2014

All walks start at 6.30 pm from indicated starting points below. They are timed to last approximately one and a half hours, and are open to Trust members. Bookings are made on a first-come-first-served basis and these walks do fill up very quickly. As places are limited, we ask members to inform us if they have to withdraw, so that their place(s) can be offered to those on the waiting list.

To apply: please complete enclosed booking form.

From Abercrombie to Buchanan

– led by Dr Amy Frost

Wednesday 11 June and Thursday 19 June at 6.30 pm.

Starting at the Building of Bath Collection, Vineyards, Paragon.

Exploring some of the elements and ideas that link two of the key development proposals for post-war Bath: Patrick Abercrombie's "Plan for Bath" and Colin Buchanan's "Bath, a Traffic and Transport Study" of twenty years later.

A Treasureless Treasure Hunt

– organised by Alan Williams

Wednesday 16 July and Thursday 24 July at 6.30 pm.

Starting from (and ending at) No. 1 Royal Crescent.

No prizes, just a pleasant evening walk around the City to test your powers of observation and some knowledge! 50 questions on a variety of subjects from Royalty to Statues and from Inventors to Architecture. Make up a team of three or four beforehand, or come along and make up a team on arrival. Don't forget a pen or pencil - all else will be provided. Pick up your route and questions between 6.00 and 6.30 from No. 1 Royal Crescent. Maximum finish time is 8.15 back at No. 1 for the answers, but most should make it well before then!



The world-renowned Royal National Hospital for Rheumatic Diseases ('The Min'), founded in 1738

A Tale of Two Hospitals

– led by Alan Williams

Wednesday 6 August and Wednesday 13 August at 6.30 pm.

Starting from outside The Cross Baths at the end of Bath Street.

A joint visit to St John's Hospital and The Mineral Water Hospital.

We start with a short talk on the history and present day background of St John's, and a chance to view the church. We shall then take a short walk to the Mineral Water Hospital where members will be able to visit the recently opened museum. Members of the hospital staff will be on hand to talk about the history of "The Min" and also to make available some of the museum artefacts to handle. This interactive material is being made available especially for our visit. A rare opportunity.

AGM Notice

The 2014 Bath Preservation Trust AGM will be held at 4.00 pm on Wednesday 25 June at The Building of Bath Collection. Invitations to attend will be sent in May.

World Heritage Site Enhancement Fund



Street sign conservation continues

Projects in prospect for 2014 include more interesting and exciting proposals, some initiated by the Fund, and some suggested to us. The Fund will be supporting the Alexandra Park Forum in the installation of a new Orientation Table to interpret one of Bath's most iconic views. The ugly modern lanterns lighting Walcot Passage Steps are to be replaced with new lamps and brackets, to a carefully researched and historically appropriate design.

The rolling programme of street sign conservation continues, and Iain Cotton will be working on the sign for Axford Buildings, at the east end of the Paragon, from 28 April, if you would like to see the work in action.

For information and to suggest projects, please contact the Administrator, Ainslie Ensom, at whsef@bptrust.org.

The Whole Story Project draws to a close

The final planned tasks associated with *The Whole Story Project* are now complete with the defects and some extra works being completed during the winter closure as anticipated, as well as the stone bench being installed in the Courtyard Area and the searchable archive catalogue going live on line in February. These works would have been the end of the project but the Heritage Lottery Fund have kindly allowed us a few extra months to further enhance our interpretation at No 1, continue to add to our educational resources and handling collections, do further conservation work to collection items and sort out problems with induction loops and water ingress that are proving difficult to resolve. The project will therefore now officially come to an end, still within budget, when the 'Portrait of a Lady?' exhibition is installed in early May with final documents being submitted to the Heritage Lottery Fund shortly thereafter.

This is therefore my last contribution to a Trust newsletter and I would like to take this opportunity to say it has been a pleasure to work in a team with such dedicated, knowledgeable, supportive and just generally lovely people. By people I mean everyone involved, not just Trust and museum staff but also all of the Trustees, volunteers, guides, advisors, consultants and contractors. It has been a great project and I wish the Trust and museum continuing success in the future.

Of course I can't resist noting, however, that despite the project coming in under budget and the generous support of the Heritage Lottery Fund, the Brownsword Charitable Foundation, various Trusts, Foundations and individuals who have made the project possible, we will still have to use some of the Trust's reserves to complete it. So fundraising continues to cover the shortfall and support other Trust activities and any help you can give in this regard will be gratefully received!

Project Manager: Nicola Watts



Access all eras – in beautiful Bath

No. 1 Royal Crescent was Bath's only museum to be promoted by VisitEngland in its recent accessible destinations campaign. Paralympian Ben Rushgrove visited us with a friend who uses a wheelchair, and declared the museum fascinating as well as truly accessible.

“Despite the age of the building most of it was accessible by wheelchair.

There are also lots of features for those with visual and hearing impairments.”

Ben's visit and feedback provided the backbone to a Daily Express feature (8 March) on Bath's accessibility, read by over half a million people. To see our involvement visit: www.visitengland.com/access-bath. To read Ben's blog about his visit see: www.visitbath.co.uk/blog/bath-an-accessible-city. And finally, to download Bath's Accessibility Guide (entitled Relaxation, romance and...ramps) visit: www.visitengland.com/bathaccessibileguide.



Publicity for No. 1

The restoration and reopening of No. 1 has been at the centre of some excellent magazine features and news items, at regional, national and international levels. If you would like to read them all then do pop in and ask to see the Press Book in the guide's room. Some are copied to the website, too.

Since 1 January 2013:

- ~ 15 international features, in publications ranging from Sweden's 'Financial Times' to the Miami Herald
- ~ 23 national features, from Building Construction journals to Country Life, with every national newspaper in-between
- ~ Extensive regional coverage in local magazines, newspapers, TV and radio broadcasts, online blogs and family websites.

No. 1 Royal Crescent

Guides Winter Lecture Series

Although No.1 Royal Crescent closes to visitors over the winter, our volunteer guides are still involved in activities and the January guides lecture series is a highlight of the year, providing a rare opportunity to get everyone together as well as learn about different aspects of life in 18th century Bath. This year we had to find a new venue to accommodate our increased number of guides, and BRLSI provided the ideal location with plenty of space for everyone.

We were also fortunate to have three outstanding speakers. Karen Harvey of the University of Sheffield spoke to us about men and writing in the 18th century home, shedding light on the process of keeping a common place book. Henry Sandford, the first resident of No.1 kept a common place book and it has provided us with a wealth of information about his interests and thoughts. Karen explained how men's domestic accounts not only demonstrated a well ordered household but also reflected their moral standing, hence 'giving a good account of oneself'.

Dr. Kim Sloan is curator of the Enlightenment Gallery at the British Museum and her lecture was a fascinating insight into discovery and learning in the 18th century, while the final lecture by author and curator Dr. Hallie Rubenhold was a lively introduction to this year's major exhibition at No.1 Royal Crescent: 'Portrait of a Lady?'. It was a varied programme which left everyone looking forward to the forthcoming season.



Dr. Hallie Rubenhold

Hallie is curating our 'Portrait of a Lady?' exhibition and will be giving a public lecture on 17 September for our autumn lecture series at No. 1 (see overleaf).



**The Old Matchwoman, 1790, by Thomas Barker (1769 – 1847).
On loan from the Victoria Art Gallery, Bath and North East
Somerset Council**

A New Face at No. 1 Royal Crescent

On 31 October 1796 the Bath Chronicle published the following advertisement: 'On the premises lately occupied by Henry Sandford Esq. Being No.1 Royal Crescent. To be held on Tuesday November 1 and three following days. [Among the items to be sold are] A painting of a Match-Woman, a well-known character allowed by Connoisseurs to be one of the best pieces of Mr. Thomas Barker.'

Thomas Barker of Bath (1769 - 1847) was still a young artist when Henry Sandford was living at No.1 Royal Crescent but he was already interested in portraying so-called 'rustic figures', including pedlars and labouring country folk, a subject he was to return to throughout his career. Such subjects were far removed from the elegant world of 18th century Bath, yet they must have appealed to Henry Sandford, who perhaps saw in them some of his own interest in agriculture and the land. The same advert mentions that Sandford also owned another painting by Barker: 'a painting of Tom Thumb, a well-known character, [of] which an Engraving has been taken.'

Both paintings are now in the collection of the Victoria Art Gallery, Bath. Richard Brent, a pedlar commonly known as 'Tom Thumb' was well-known in Bristol and Bath and although the identity of 'The Old Matchwoman' 1790 is not known she would undoubtedly have also been an equally familiar face on the streets of Bath, selling her wares. Barker's sensitive portrait shows her as careworn and exhausted after a lifetime of toil. As no other versions of the same subject are known it is very likely that this is the painting owned by Sandford and we are grateful to the Victoria Art Gallery for agreeing to a long loan so it can be shown in the Gentleman's Retreat where it may possibly have hung so many years before.

No.1 Royal Crescent

Forthcoming Exhibition: Portrait of a Lady? 16 May – 14 December 2014

The Brownsword Gallery has transformed the visit to No.1 Royal Crescent because for the first time we have a dedicated exhibition space. A major exhibition this summer provides a rare opportunity to see an important private collection of 18th century mezzotints. Entitled 'Portrait of a Lady?' it includes over 60 mezzotints of Georgian women from different levels of society including actresses, courtesans and duchesses.



Miss Montague – mezzotint engraved by John Raphael Smith after his own design, published in London by W. Humphrey in 1777. Named as Harriet Montague, she may have been one of the "Ladies" depicted by Smith in his print "Promenade at Carlisle House" (1781)

The exhibition looks at the status of different women in the 18th century, how they viewed themselves and how they were viewed by society. It considers the role of the mezzotint in the popularisation of these images and will also look at the social fluidity of 18th century society whereby a prostitute or actress might rise through the social ranks to become a celebrated courtesan and then marry into nobility, or conversely where a woman born into wealth and status might be damned as a whore for having a relationship outside of marriage.

Many of these women became celebrities, their images appeared on watch papers and decorative objects and they were the subject of popular ballads. The exhibition also considers how women created their own image through cosmetics and fashion and challenges the viewer to spot for themselves which of the images really portray a 'Portrait of a Lady'.

The exhibition is being curated by Hallie Rubenhold, author of 'The Covent Garden Ladies' and editor of a recent reprint of 'Harris's List of Covent Garden Ladies', an essential pocket book for any gentleman on the town in Georgian London! Bath plays a part in the story too because Samuel Derrick, the author of Harris's List, went on to become Master of Ceremonies at Bath, while the stories of other notorious women with Bath links, such as Kitty Fisher and Fanny Murray, are also told.

This remarkable collection challenges many popular misconceptions about women's lives in the 18th century, as well as showing 'vice on a level with virtue'.

Two Museums – One Ticket

Fashionable Bath. During 2014 we are offering a combined ticket with the Fashion Museum at the Assembly Rooms, where the exhibition 'Georgians: Dress for Polite Society' showcases over 30 original 18th century outfits.

Do tell your friends about this special offer!

Adults £13 | Concessions £11 | Child £7.50 | Family (2 + 4) £32

Events at No.1 Royal Crescent

Friday 25 April at 11.00am

The Jacob Kirkman Harpsichord which is on loan to No.1 can be heard on April 25 when harpsichordist Timothy Lloyd will be playing this rare and beautiful instrument. It is hoped that we can make these informal sessions a regular feature of the last Friday of the month, either with Timothy or with other experienced harpsichordists. See website for confirmation and further details.

Friday 16 May from 5.30 - 7.30pm

There is an opportunity to enjoy the atmosphere of No.1 in the evening when music will bring the house to life. As part of Party in the City, the opening event of Bath International Music Festival, and to celebrate Museums at Night, Beatrice Newman (cello) and Bethan Semmens (Harp) will be playing at No.1. We hope that the harpsichord will also be played. Admission is free for this special event.

Portrait of a Lady?

There will be a varied programme of lectures and events in connection with the exhibition. They include 'Portrait of a Lady?': Ruin and Reputation in the Georgian Era by Hallie Rubenhold, the exhibition curator, at 4.30 pm on Wednesday 17 September and a lecture by Lisa Hilton about Lavinia Fenton on Wednesday 1 October. More events will be confirmed closer to the date so please check the website for updates.

Please check the website regularly for details of further events taking place at No.1 over the summer.

No.1 Royal Crescent

Shortlisted for a 2014 Museums and Heritage Award for Best Permanent Exhibition

We are delighted to report that No.1 has been shortlisted for this prestigious national award and await the announcement of the winner on 14 May.

We are in prestigious company - the full shortlist is:

- Birmingham Museums Trust, We Made It: Nuts Bolts Gadgets and Gizmos at Thinktank, Birmingham Science Museum
- Bath Preservation Trust, No 1 Royal Crescent - The Whole Story
- The Mary Rose Trust, The New Mary Rose Museum
- National Maritime Museum, Nelson, Navy, Nation
- Historic Royal Palaces, Coins and Kings: The Royal Mint at the Tower
- Barnsley MBC Arts, Museums & Archives, Experience Barnsley Museum & Discovery Centre.



Stone bench unveiled

A stone bench designed and produced by students from the City of Bath College has now been installed at No. 1 Royal Crescent. The bench is the culmination of a two year project linked to the recent major redevelopment of No. 1. The stone for the project was donated by the Bath Stone Group.

Tom Boden, BPT Head of Museums said "We are delighted to have this beautiful stone bench installed at the courtyard of No. 1 Royal Crescent. We were so pleased with the innovative design produced by Sam Flintham, a student at the City of Bath College, and it is wonderful to see the bench finally completed, ready to be enjoyed by thousands of visitors to No. 1 Royal Crescent."



**L-R: Sam Flintham (student who designed bench)
Elaine Marson – CEO of Bath Stone Group
Paul Maggs – Stonemasonry Tutor at City of Bath College
Edward Bayntun-Coward – BPT Chairman**

Bath Museums Partnership

A. Developing audiences for Bath's Museums

No.1 Royal Crescent is leading - along with the Holburne Museum and the American Museum - in an Arts Council England funded campaign to develop a Bath Museums Partnership. The idea behind it is a simple one - to encourage more people to explore the rich variety of museums in Bath. Through working together we aim to demonstrate the benefits of joint approaches to audience development and marketing, and to share best practice in order to improve experiences for our visitors. You may have noticed the Seriously George-dropping posters and promotional material around the city!



B. See how the other half lived

As a lead partner, No.1 benefits from its own ACE funded marketing campaign which is taking place this spring. The first manifestation is the visual campaign we have mounted on the sides of city-centre buses and at the Bath Spa rail station, coupled with posters and flyers spread all over town. Hopefully you have noticed the following visual:



We will survey our visitors to obtain feedback and assess the success of this new marketing initiative.

Building of Bath Collection

The Countess of Huntingdon Room

Alongside celebrating the 80th anniversary of Bath Preservation Trust, 2014 also marks the 30th anniversary of the Trust's purchase of the Countess of Huntingdon's Chapel, now home to the Building of Bath Collection. To mark the anniversary this year we opened a new permanent display about the Countess and her chapel in Bath.



Selina Hastings, Countess of Huntingdon
Unknown Artist
18th century copy after painting by John Russell

Famous for her religious faith and promotion of Calvinistic Methodism in England and abroad Selina Hastings, Countess of Huntingdon (1707 - 1791) commissioned and funded a series of chapels in fashionable towns in order to attract the higher ranks of 18th century society to Methodism. The first chapel was built in Brighton in 1761, then Bath in 1765 and Tunbridge Wells in 1769. By the time of her death in 1791 she had commissioned sixty-three chapels and created the new Christian denomination The Countess of Huntingdon's Connexion.

Having visited Bath early in her marriage the Countess became a regular visitor to the city during the 1760s for her health. In 1764 she purchased a piece of land in The Vineyards and commissioned the building of this Gothic Revival chapel which was officially opened on 6 October 1765. Although the builder of the Chapel was most likely John Case who worked with her on other buildings, the actual architect of the building has yet to be discovered.

The galleries of the chapel were altered on three occasions and in 1841 the School House was built by Bath architect George Phillips Manners. By 1922 the congregation was dwindling and the Chapel united with the Trinity Presbyterian Congregation, becoming the Trinity Presbyterian Church and later the Trinity United Reformed Church. The last worship in the building was held in 1981 and in 1984 Bath Preservation Trust purchased and restored the building to mark its 50th Anniversary.

The Countess when in attendance in Bath would sit in a side room at the back of the chapel, decorated like a private pew with comfortable furnishings and a fireplace; it is this same room that is now where the Countess of Huntingdon exhibition can be seen.



The Grand Pump Room and Roman Baths model made by Rosalind Hudson

Exhibition: Modelling the Buildings of Bath Rosalind Hudson 1926 – 2013

Modelling in miniature the intricate details of Georgian buildings requires great skill, patience and dexterity. Creating models of the calibre of those now on display at the Building of Bath Collection also requires an in-depth knowledge and understanding of architectural style and proportion. When you add to these qualities a pure passion for buildings you then get the work of Rosalind Hudson. An extraordinary woman who once worked alongside Alan Turing in Hut 8 at Bletchley Park, Ros went on to combine her artistic training with her love of Georgian architecture to create painstakingly detailed wooden models for museums, private individuals and even the Prince of Wales. In 1991-2 when the Building of Bath Museum was being established Rosalind created a wonderful series of elevations of Bath buildings designed to illustrate the stylistic changes in architecture during the Georgian period. To mark her death last year, the complete set of models are now on display alongside the fantastic model of the Grand Pump Room and Roman Baths she made, on loan from B&NES Heritage Services.

The models are on display at the Building of Bath Collection until 30 November 2014.

Lectures at the Building of Bath Collection

As part of the 80th anniversary of the Trust's establishment this year's lecture series is loosely based around the subject of campaigning. It started in style with writer and broadcaster Jonathan Glancey Pulling the Plug on Bath on 18 March. Jonathan, currently working on a book about the state of housing in the UK, gave an uncompromising account of the way in which politics and the power of developers has led to the diluting of quality design in mass housing. Following up on this Colin Johns, former Chairman of the UK Association of Building Preservation Trusts discussed the history of organisations like Bath Preservation Trust as vital parts of the conservation movement in his lecture Old Buildings - New Ideas: Building Preservation Trusts in Action on 8 April. Colin delivered a passionate account of how groups of individuals, no matter how small, can form a building preservation trust and really help to save buildings.

More lectures on campaigning will follow in the autumn so keep an eye on the Trust's events programme.



The Ladies Entertaining Miscellany and Polite Repository for 1823, with a view of Fonthill Abbey from the west

Exhibition: Views of Lansdown Tower

Following the success of last year's exhibition Views of Fonthill Abbey, this year at Beckford's Tower our exhibition centres around the book published shortly after Beckford died in 1844 called Views of Lansdown Tower. Beckford himself commissioned the watercolour illustrations for the book before he died, from artist Willes Maddox, and the lithographs published in the book remain our greatest source of information about what the interiors of the Tower were like in Beckford's lifetime. Our problem had always been that the folio sized book was too large for us to display at the Tower due to not having a display case big enough! But with thanks for a small museums grant from Bath and North East Somerset Council we were able to commission a bespoke case and book cradle, allowing us to display this highly significant book in the museum at the Tower it celebrates. Alongside the book and all the lithographs found within it, are displayed other watercolours and sketches including some of the original architectural drawings by the Tower's architect Henry Edmund Goodridge on loan from Bath Central Library.

A delightful watercolour by WH Bartlett captures a rare view of the building from the north, and an atmospheric sepia wash view by Henry Venn Lansdown shows the strength of the Tower's design as it rises above the landscape. Both are on loan from a private collection, reinforcing our aim at the Tower to use temporary exhibitions to bring together items from collections of dedicated Beckfordians that are not normally on display to the public. The Tower featured in several engravings published both during Beckford's lifetime and after his death when the building became Walcot Parish mortuary Chapel.

Using all of these views makes it possible to see changes made to the building and its immediate garden as the details of the landscape slowly disappeared throughout the nineteenth and into the twentieth century.

Views of Lansdown Tower is on at Beckford's Tower until 26 October 2014.

New Acquisition

The Tower collection has recently been added to through the generous gift of a small but delightful ladies pocket journal from 1823 that includes an engraving and account of Fonthill Abbey. The Ladies Entertaining Miscellany and Polite Repository for 1823, is a small printed diary, that also has useful pieces of information such as 'lists of transfer days at the bank' and instructions for 'Preston's Fashionable Country Dances of 1823'. The account of Fonthill, an extract from Whittaker's A New Guide to Fonthill Abbey from the same year, is at the very front of the book, highlighting how socially significant the opening up of the Abbey in 1822 and 1823 for the viewing of the auction was. Sadly the engagement pages are not filled in and there is no hint of who once owned this book, but there are a few annotations with the answers to 'Enigmas' that are set at the back of the books; the 1823 equivalent of having crosswords or Sudoku in a diary today.

Herschel Museum of Astronomy

Exhibition: Being Caroline A second self... 16 April – 18 December

In 2014 we are celebrating the life and work of Caroline Herschel. Hers was the ultimate Cinderella story; she was rescued from a life of neglect and drudgery at home not by a handsome prince, but by the kindness of her elder brother William. Disfigured by smallpox as a child, Caroline's father cautioned her 'against all thoughts of marrying, saying as I was neither handsome nor rich, it was not likely that anyone would make me an offer.'

It was her father who introduced Caroline to the magic of stargazing, 'taking me on a clear frosty night into the street, to make me acquainted with several of the beautiful constellations, after we had been gazing at a comet...'

The exhibition examines every aspect of Caroline's life; her education, her singing career, her struggle to be a worthy housekeeper for her brother, her reluctant forays into the social life of Bath and her extraordinary career as an astronomer. 'She was attached during fifty years as a second self to her brother,' wrote her nephew John Herschel.



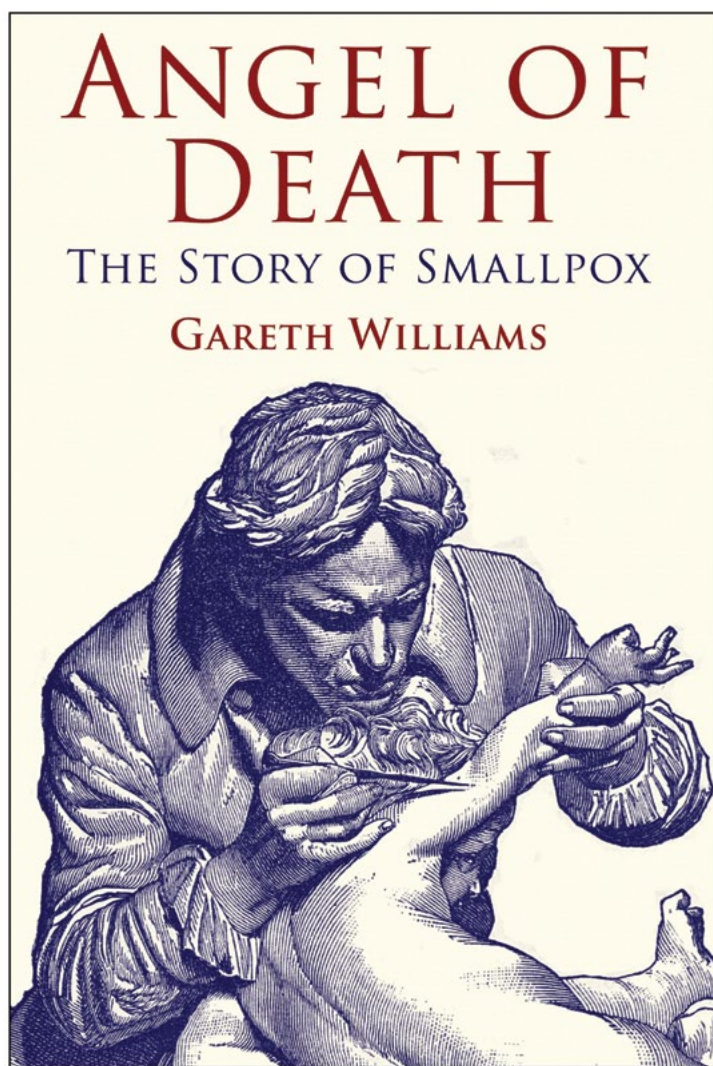
Silhouette of Caroline Herschel

Events at the Herschel Museum of Astronomy

Wednesday 7 May **Paint Powder and Patches**

Discover the secrets of the perfect Georgian maquillage. A demonstration of 18th century make-up by Elle Hitchens with accompanying exhibition.

2pm - 3pm, free on admission to the museum.
First come first served as numbers will be limited.



Thursday 15 May **Angel of Death: the story of smallpox**

A look at the history of one of the great killers and mutilators in human history, and of its eventual defeat by vaccination - which was pioneered and forced into medical practice by Dr Edward Jenner of Berkeley.

Gareth Williams MD ScD FRCP FRCPE, Emeritus Professor of Medicine and Senior Research Fellow in Philosophy, University of Bristol
11am, £5 on the door.

Visitors to the Herschel Museum will be offered a 2 for 1 voucher for Dr Jenner's House in Berkeley throughout the 2014 season.

Fundraising and Development

Spring brings the first of the special events for members of the No. 1 Fan Club with a guest lecture on 25 April and then a champagne reception following the AGM on 25 June. These are just some of the benefits of membership of the No. 1 Fan Club which helped with the final stages of the restoration of No. 1 Royal Crescent and we look forward to seeing all Fan Club members at these events. The support of Fan Club members was an essential part of the complex and exciting project to restore this world famous Georgian house and museum and judging by the comments our visitors are leaving on TripAdvisor, they really appreciate all that has been achieved.

While fundraising specifically for the restoration of No. 1 is now drawing to a close we continue to seek support for the vital work of Bath Preservation Trust, both through its campaigning work to protect the status of the World Heritage city and its

environs and to support the running of our four museums whose collections help explain life in Bath's heyday, and why the Georgian period is such a key period in the city's history.

Bath Preservation Trust is a charity with no assistance from public funding and ongoing financial support for our work is therefore essential. It is very easy to donate to Bath Preservation Trust through our website - simply go to www.bath-preservation-trust.org.uk and click on the donate button on the home page. Alternatively, please contact Jan Hull, Development Officer at Bath Preservation Trust, +44 (0)1225 338727 or email fundraising@bptrust.org.uk to discuss other ways of making a donation.

We greatly appreciate all the donations we receive and we're very grateful to our many supporters who have helped our work over the past 80 years.

Archives



Union Street, [late 1960s] from the Michell Collection, Bath Preservation Trust Archives

With the tireless support of our dedicated group of volunteers, work on the sorting, conservation and restoring of the material is ongoing, with two recent achievements:

- The transfer of corporate archived records to the archive store at No. 1 Royal Crescent in November 2013, freeing up more space at the other archive and assisting with preservation and accessibility for researchers.
- The launch of the online catalogue in February 2014 with 927 records uploaded. The cataloguing of records continues and these will in turn be added to the system.

Archivist - Sarah Harris

Education and Partnerships



The language of the fan is revealed

Visits by schools to No.1 are proving very popular and students are learning about varied aspects of Georgian life by wearing costumes, looking closely at objects in each room and trying out cookery and laundry techniques. Teachers have said that they are delighted with the experience. One said "The children really enjoyed themselves and they learned so much".

February half term activities were well attended and children (and adults) enjoyed trying on costumes and wigs in the Servants' Hall Learning Centre. They also had the opportunity to whiten their faces with makeup and stick on a face patch before hearing about the 'good, bad and ugly' aspects of Georgian beauty.

Upstairs in the Withdrawing Room, visitors learned the language of the fan and practised dance steps accompanied by a melody played on the harpsichord. At the Building of Bath, visitors created imaginative Lego houses for a giant townscape map.

Education Officer - Polly Andrews

Please consider making a legacy to the Bath Preservation Trust in your Will

When Sir Bernard Cayzer left No. 1 Royal Crescent to the Trust in his will, he gave us a marvellous asset which allowed us to develop a renowned museum. But he also gave us our financial independence. Legacy gifts to the Trust do not need to be as magnificent as No. 1 to continue this valuable role. The Trust will be very grateful for any contribution that you are able to make through a legacy.

Bath's 'World Heritage' status means that our campaigning work continues to be an essential part of Bath's development, and our education and interpretation work ensures that the widest possible audience understands our purpose 'to encourage and support the conservation, evolution and enhancement of Bath and its environs within a framework appropriate both to its historic setting and its sustainable future, and to provide educational resources that focus on the architectural and historic importance of the city'.

The Trust's influence and independent voice is needed as much in the 21st century as it was in the 20th century. But our ability to fulfil this role is directly in proportion to our resources. Together with the support of our members, we need to add to those resources to continue to act for the benefit of the people of Bath.

If your estate is liable to Inheritance Tax, you could reduce the amount due by choosing to give the money to charity. If you leave a gift to a charity in your will, its value will not be included when valuing your estate (your money, possessions and property) for Inheritance Tax purposes. Gifts you make to a charity in the seven years before your death are exempt from Inheritance Tax.

Leaving a gift in your will, whatever size, can make a real difference to Bath Preservation Trust and will ensure that future generations understand and enjoy our wonderful Georgian heritage.

For a confidential discussion regarding leaving a legacy to Bath Preservation Trust, or if you would like further details, please contact Caroline Kay, in confidence, on 01225 338 727 or in writing at the Trust offices at 1 Royal Crescent, Bath, BA1 2LR.



**BATH
PRESERVATION
TRUST**

We are a membership organisation and a registered charity.

The Bath Preservation Trust Limited - Registered Office:

1 Royal Crescent | Bath | BA1 2LR

+44 (0)1225 338 727

www.bath-preservation-trust.org.uk

admin@bptrust.org.uk

Registered in England No. 294789 | Charity No. 203048